

no longer available - archive entry replaced by: OBF500

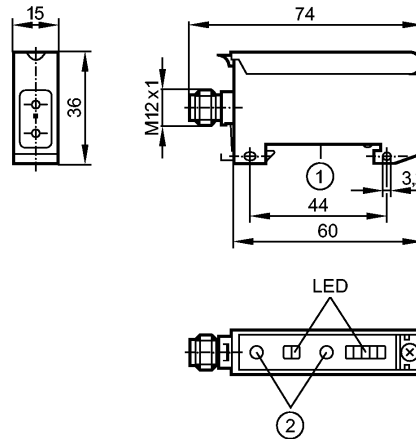
efector200

OB5014



OBF-FNKG/T/US-100

Photoelectric sensors



- 1: Mounting on DIN rail
- 2: setting pushbuttons



Product characteristics

Fiber-optic amplifier
Rectangular, plastics
Quick disconnect
For fiber optics with plastic sheath
Series FE/FT-11
Function check output
Sensing range 0...1200mm (Through-beam sensor)
Range 0...70mm (Diffuse reflection sensor)
adjustable

Electrical data

Electrical design	DC NPN
Operating voltage [V]	10...36 DC
Current consumption [mA]	35 (36 V)
Type of light	red light 660 nm
Protection class	II
Reverse polarity protection	yes

Outputs

Output function	light-on / dark-on programmable
-----------------	---------------------------------

Voltage drop

- Switching output [V]	< 2.5
- Function check output [V]	< 3.5

Current rating

- Switching output [mA]	100
- Function check output [mA]	10

Short-circuit protection	yes (non-latching)
--------------------------	--------------------

Overload protection	yes
---------------------	-----

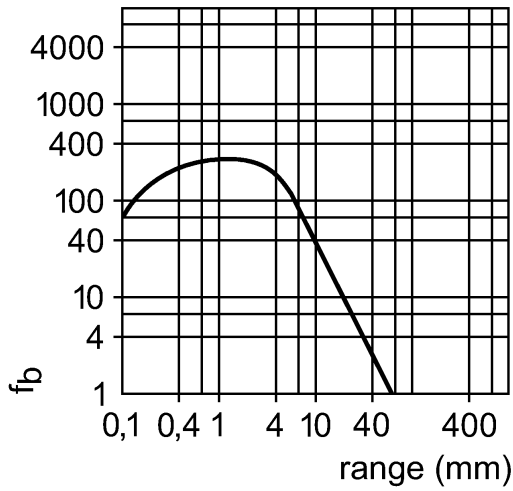
Switching frequency [Hz]	500
--------------------------	-----

Timer [s]	0.002...0.09
-----------	--------------

Monitoring range

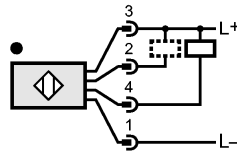
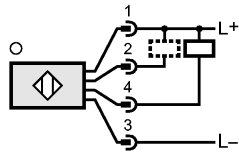
Sensing range [m]	0...1.2 (Through-beam sensor)
Range [mm]	0...70 (Diffuse reflection sensor)

Excess gain graphs



Environment	
Ambient temperature [°C]	-25...60
Protection	IP 65
Tests / approvals	
EMC	EN 60947-5-2 EN 55011: class B
Mechanical data	
Housing materials	modified PPE
Weight [kg]	0.063
Displays / operating elements	
Output status indication LED	yellow
Power LED	green
Unsafe zone LED	red
Excess gain LED	4 x green
Electrical connection	
Connection	M12 connector

Wiring



2: function check

Remarks	When through-beam fibre optics are connected light-on mode means the output function "NC" and when diffuse reflection fibre optics are connected the output function "NO". When through-beam fibre optics are connected dark-on mode means the output function "NO" and when diffuse reflection fibre optics are connected the output function "NC" cULus - Class 2 source required
Remarks	
Pack quantity [piece]	1