

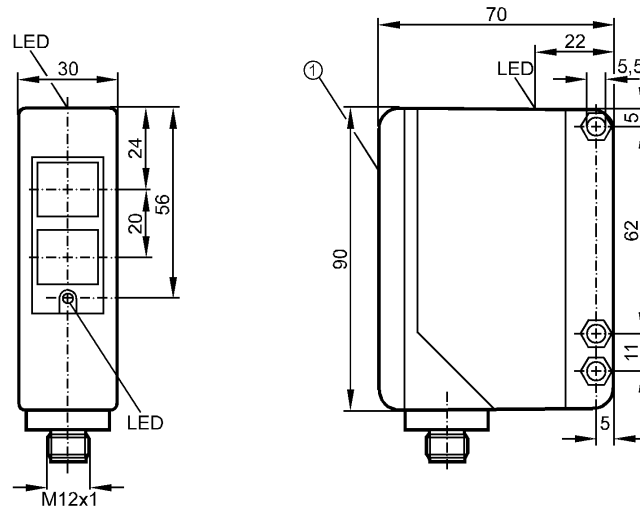
no longer available - archive entry

efector200

OA8507



Photoelectric sensors



1: selection switch, pot's (under cover)

Receiver in upper lens, transmitter in lower lens

Product characteristics

Diffuse reflection sensor

Rectangular, plastics

Quick disconnect

Function check output

Range 5...1500mm (referred to white paper 200 x 200 mm)

adjustable

Electrical data

Electrical design

DC PNP

Operating voltage [V]

10...36 DC

Current consumption [mA]

< 50

Type of light

Infrared light 880 nm

Protection class

II

Reverse polarity protection

yes

Outputs

Output function

light-on / dark-on programmable

Voltage drop [V]

< 2.5

Current rating

- Switching output [mA]

250

- Function check output [mA]

10

Short-circuit protection

yes (non-latching)

Overload protection

yes

Switching frequency [Hz]

300

Monitoring range

Range [mm]

5...1500 (referred to white paper 200 x 200 mm)

Environment

Ambient temperature [°C]

-25...60

Protection

IP 65

Tests / approvals

EMC

EN 60947-5-2

EN 55011:

class B

Mechanical data

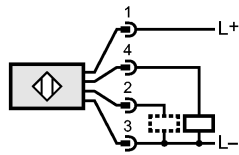
Housing materials

modified PPO

OA8507 - Diffuse reflection sensor - eclass: 27270903 / 27-27-09-03

Lens material		PMMA
Displays / operating elements		
Output status indication	LED	yellow
Power	LED	green
Function display	LED	red
Electrical connection		
Connection		M12 connector

Wiring



2: function check

Accessories		
Accessories (included)		Angle bracket; screwdriver
Remarks		
Pack quantity	[piece]	1