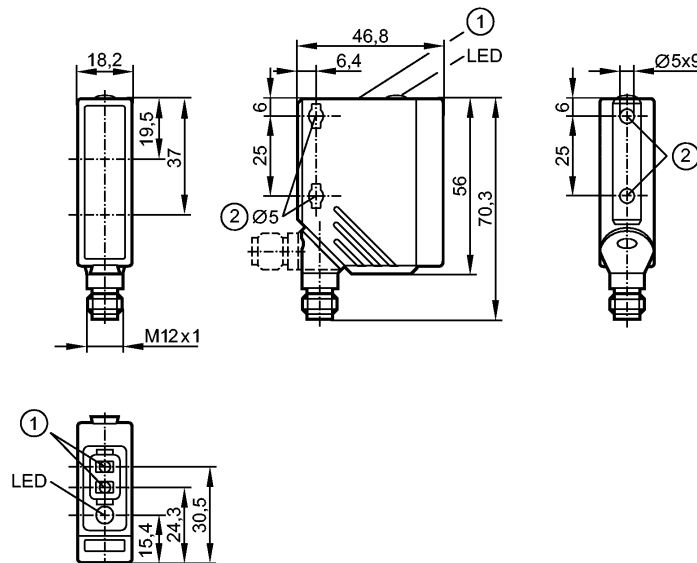


O5P500

O5P-FPKG/US100

Photoelectric sensors



- 1: Programming buttons
- 2: When a M5 mounting screw is used, the max. tightening torque is 2 Nm.

Receiver in upper lens, transmitter in lower lens



Product characteristics

Retro-reflective sensor	
Rectangular, plastics	
Quick disconnect	
Polarization filter	
Teach function	
Electronic lock	
Sensing range 0.075...10m (Prismatic reflector Ø 80 (E20005))	
adjustable	

Electrical data

Electrical design		DC PNP
Operating voltage [V]		10...36 DC
Current consumption [mA]		20
Type of light		red light 624 nm
Protection class		II
Reverse polarity protection		yes

Outputs

Output function		light-on / dark-on programmable via pushbutton
Voltage drop [V]		< 2.5
Current rating [mA]		200
Short-circuit protection		yes (non-latching)
Overload protection		yes
Switching frequency [Hz]		2000

Monitoring range

Sensing range [m]		0.075...10 (Prismatic reflector Ø 80 (E20005))
Range referred to prismatic reflector [m]	Ø 80 mm	0.075...10
	50 x 50 mm	0.075...10

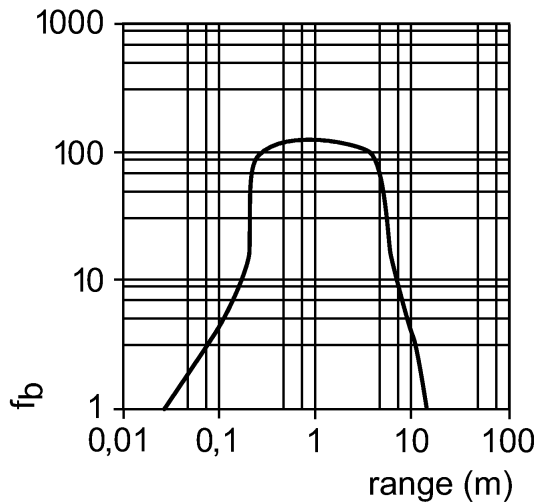
O5P500

O5P-FPKG/US100

Photoelectric sensors

Light spot diameter [mm] 250 (at maximum range)

Excess gain graphs



Environment

Ambient temperature [°C] -25...60
 Protection IP 67

Tests / approvals

EMC EN 60947-5-2
 MTTF [Years] 435

Mechanical data

Housing materials housing: PA; Front framework: high-grade stainless steel; operator interface: TPU (urethane)
 Lens material PMMA
 Weight [kg] 0.068

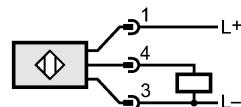
Displays / operating elements

Output status indication LED yellow

Electrical connection

Connection M12 connector

Wiring



Remarks

Remarks cULus - Class 2 source required

Pack quantity [piece] 1