

- 1: Programming buttons
2: When a M5 mounting screw is used, the max. tightening torque is 2 Nm.

Receiver in upper lens, transmitter in lower lens



Product characteristics
Diffuse reflection sensor

Rectangular, plastics

Quick disconnect

Background suppression

Teach function

Electronic lock

Range 50...1800mm (Range referred to white paper 200 x 200 mm, 90 % remission)

adjustable

Electrical data

Electrical design

Operating voltage [V]

Current consumption [mA]

Type of light

Protection class

Reverse polarity protection

Outputs

Output function

Voltage drop [V]

Current rating [mA]

Short-circuit protection

Overload protection

Switching frequency [Hz]

Monitoring range

Range [mm]

Range [mm]

- Object white (90 % remission)

- Object grey (18 % remission)

- Object black (6 % remission)

Light spot diameter [mm]

DC PNP

10...36 DC

25

red light 624 nm

II

yes

light-on / dark-on programmable

< 2.5

200

yes (non-latching)

yes

1000

50...1800 (Range referred to white paper 200 x 200 mm, 90 % remission)

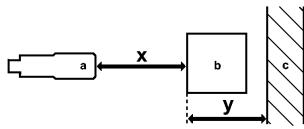
50...1800

50...900

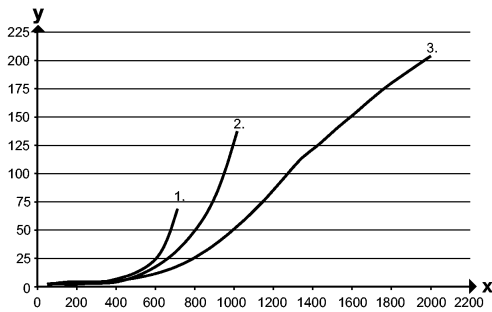
50...600

50 (Range 1000 mm)

Background suppression chart



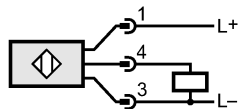
a: sensor
 b: object
 c: background
 x: distance sensor / object
 y: min. distance object / background



Values in [mm]
 1 = object black (6 % remission), background white (90 % remission)
 2 = object gray (18 % remission), background white (90 % remission)
 3 = object white (90 % remission), background white (90 % remission)

Environment	
Ambient temperature [°C]	-25...60
Protection	IP 67
Tests / approvals	
EMC	EN 60947-5-2
MTTF [Years]	360
Mechanical data	
Housing materials	housing: PA; Front framework: high-grade stainless steel; operator interface: TPU (urethane)
Lens material	PMMA
Weight [kg]	0.067
Displays / operating elements	
Output status indication LED	yellow
Electrical connection	
Connection	M12 connector

Wiring



Remarks	
Remarks	cULus - Class 2 source required
Pack quantity [piece]	1