

1: potentiometer

2: When a M5 mounting screw is used, the max. tightening torque is 2 Nm.

Receiver in upper lens, transmitter in lower lens



Product characteristics

Diffuse reflection sensor

Rectangular, plastics

Quick disconnect

Background suppression

potentiometer

Range 50...1400mm (Range referred to white paper 200 x 200 mm, 90 % remission)

adjustable

Electrical data

Electrical design

Operating voltage [V]

Current consumption [mA]

Type of light

Protection class

Reverse polarity protection

Outputs

Output function

Voltage drop [V]

Current rating [mA]

Short-circuit protection

Overload protection

Switching frequency [Hz]

Monitoring range

Range [mm]

Range [mm]

- Object white (90 % remission)

- Object grey (18 % remission)

- Object black (6 % remission)

Light spot diameter [mm]

DC PNP

10...36 DC

25

red light 624 nm

II

yes

light-on mode

< 2.5

200

yes (non-latching)

yes

1000

50...1400 (Range referred to white paper 200 x 200 mm, 90 % remission)

50...1400

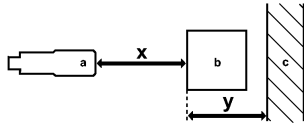
50...800

50...550

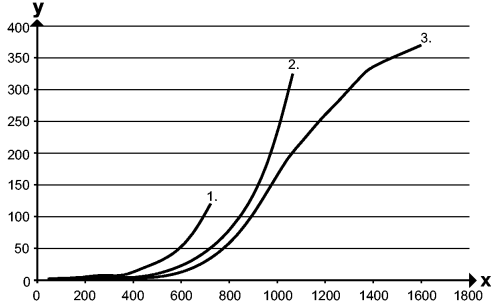
50 (Range 1000 mm)

Background suppression chart

O5H200 - Diffuse reflection sensor - eclass: 27270904 / 27-27-09-04



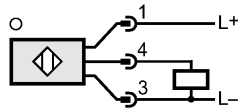
a: sensor
 b: object
 c: background
 x: distance sensor / object
 y: min. distance object / background



Values in [mm]
 1 = object black (6 % remission), background white (90 % remission)
 2 = object gray (18 % remission), background white (90 % remission)
 3 = object white (90 % remission), background white (90 % remission)

Environment	
Ambient temperature [°C]	-25...60
Protection	IP 65
Tests / approvals	
EMC	EN 60947-5-2
MTTF [Years]	331
Mechanical data	
Housing materials	housing: PA; Front framework: high-grade stainless steel; operator interface: TPE
Lens material	PMMA
Weight [kg]	0.062
Displays / operating elements	
Output status indication LED	yellow
Electrical connection	
Connection	M12 connector

Wiring



Remarks	
Remarks	cULus - Class 2 source required
Pack quantity [piece]	1