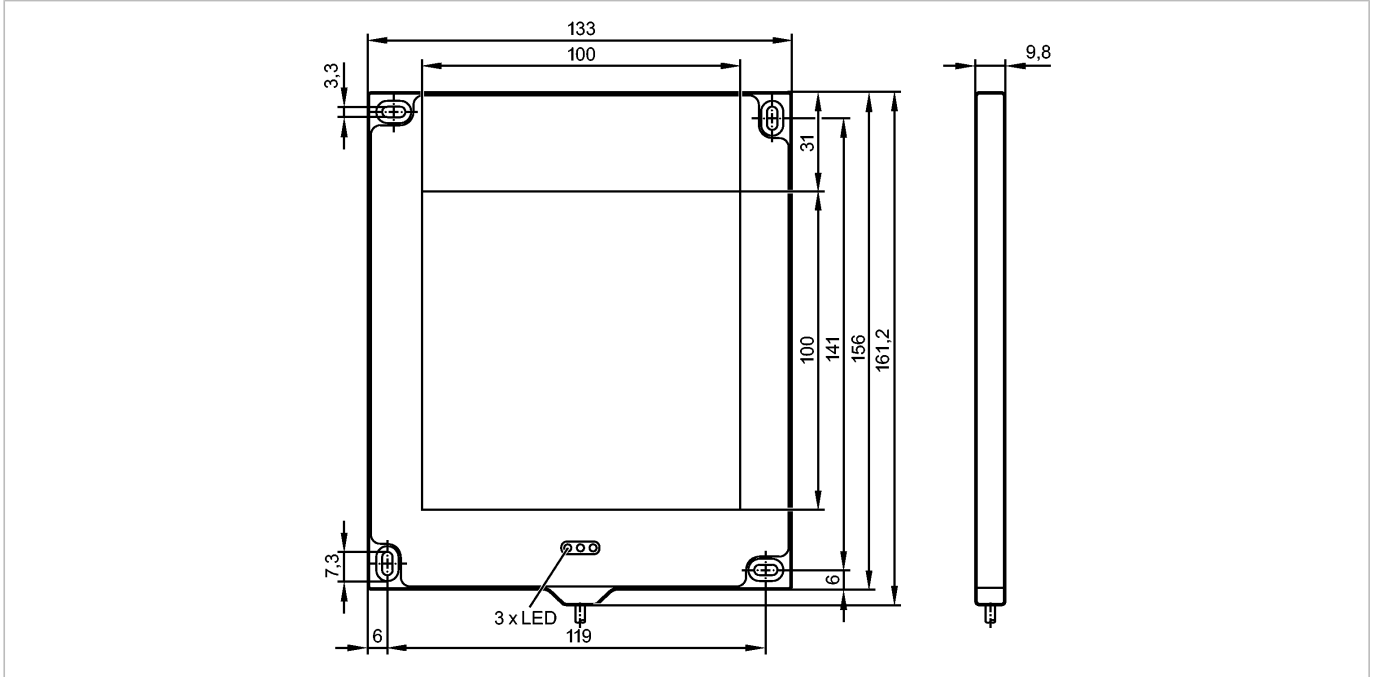




BACKLIGHT 100X100 INFRARED

Object recognition



Product characteristics

Illumination unit

Illuminated area:

100 x 100 mm

transmitter infrared 880 nm

Externally programmable

Electrical data

Operating voltage	[V]	24 DC ± 10 %
Current consumption	[mA]	450 *) / 250**)
Type of light		Infrared light 880 nm
Protection class		III
Reverse polarity protection		yes
Type of operation		- high light intensity (max. pulse length: 50 ms; max. mark-to-space ratio: 1/10) - normal light intensity (permanent operation possible)
Inputs		
Trigger		External; 24 V PNP to IEC61131-1
Outputs		
Overload protection		yes
Environment		
Ambient temperature	[°C]	0...50
Protection		IP 65
Temperature protection		yes
Tests / approvals		
MTTF	[Years]	227
Mechanical data		
Housing materials		aluminum
Lens material		PMMA
Weight	[kg]	0.342
Displays / operating elements		
Display		Illumination status 1 x LED yellow Power 1 x LED green Excess temperature / overload 1 x LED red

O2D905 - Illumination unit - eclass: 27310204 / 27-31-02-04

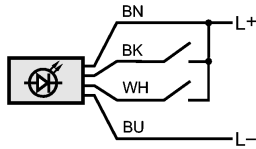
Electrical connection

Connection | PUR cable / 2 m; 4 x 0.14 mm²

Wiring

Core colors

- BK black
- BN brown
- BU blue
- WH white



BK: Trigger
WH: Operating mode "high light intensity"

Remarks

Remarks | *) Operating mode "permanent operation"
**) Operating Mode "High Light Intensity"

Pack quantity [piece] | 1