

Please note the wiring of the sensor and the sockets (see data sheet) as for 8-pole sockets the core colours are not standardised.

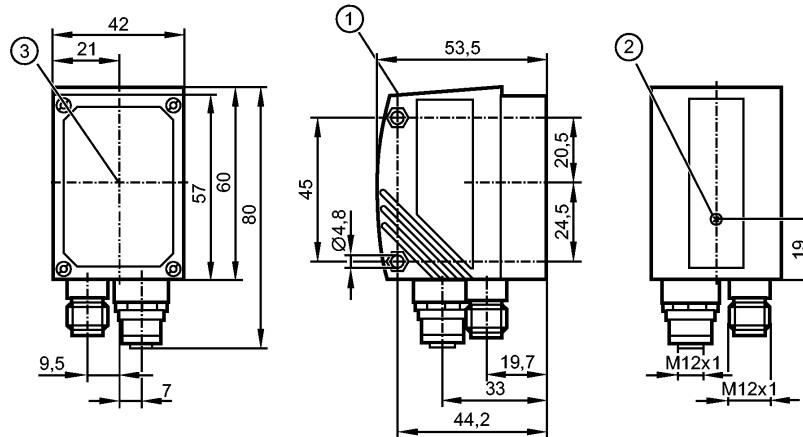
**efector250**

O2D220



O2DIRPKG/K

Object recognition



- 1: display
- 2: Focus adjustment screw
- 3: Centre of the lens axes



Product characteristics

Object recognition sensor

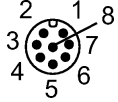
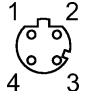
Max. field of view size: 640 x 480 mm

Infrared lighting 850 nm

Electrical data

Operating voltage	[V]	24 DC $\pm$ 10 %						
Current consumption	[mA]	300						
Type of light		Infrared light 850 nm						
Protection class		III						
Reverse polarity protection		ja *)						
Connection external illumination	[V]	24 V DC						
Type of sensor		CMOS image sensor B/W, VGA resolution 640 x 480						
Inputs								
Circuit		max. 2 (configurable) / 24 V PNP to IEC 61131-2 type 1						
Trigger		external; 24 V PNP to IEC 61131-2 type 1 internal						
Outputs								
Output		max. 5 (configurable) / 24 V PNP						
Max. current load per output	[mA]	100						
Voltage drop	[V]	< 2						
Short-circuit protection		yes						
Overload protection		yes						
Monitoring range								
Operating distance	[mm]	50	75	100	200	400	1000	2000
Field of view size	[mm]	16 x 12	24 x 18	32 x 24	64 x 48	128 x 96	320 x 240	640 x 480
Smallest detectable object	[mm]	0.1	0.2	0.3	0.4	0.8	2.0	4.0
Resolution	[mm]	0.025	0.05	0.075	0.1	0.2	0.5	1.0
Detection rate	[Hz]	$\leq$ 20						
Motion speed	[m/s]	typ. 1						
Software / programming								
Parameter setting options		via 2 pushbuttons and 10-segment display or via PC / notebook with operating software						
Interfaces								

**O2D220 - Object recognition sensor - eclass: 27280103 / 27-28-01-03**

parameter setting interface	Ethernet TCP/IP; 10Base-T / 100Base-TX
Process interface	Ethernet TCP/IP (Port: 50010), EtherNet/IP
IP address	192 .168 .0 .49
subnet mask	255.255.255.0 (Class C)
gateway IP address	192 .168 .000 .201
MAC address	see type label
Environment	
Ambient temperature [°C]	-10...60
Storage temperature [°C]	-40...85
Protection	IP 67
Tests / approvals	
EMC	radiation of interference to EN 61326 noise immunity to EN 61326
MTTF [Years]	90
Shock resistance	IEC 60028-2-27
Vibration resistance	IEC 60028-2-6
Mechanical data	
Housing materials	housing: diecast zinc powder-coated; window: glass; LED window: polycarbonate
Weight [kg]	0.4
Displays / operating elements	
Display	Function display 3 x LED green 4 x LED yellow Display unit / status 4-digit 10-segment display
Electrical connection	
Connection	M12 plug, 8 poles M12 socket, 4 poles
<b>Wiring</b>   	M12: Process connection 1: U+ 2: trigger input 3: 0 V 4: Switching output 5 / trigger output 5: Switching output 3 / Ready 6: Switching output 4 / OUT 7: Switching output 1 / Input 1 8: Switching output 2 / Input 2  Ethernet TCP/IP: parameter setting/process connection 1: TD+ 2: RD+ 3: TD- 4: RD-
Accessories	
Accessories (optional)	Operating software; Mounting accessories
Remarks	
Remarks	cULus - Class 2 source required *) The voltage on pins 2, 4, 5, 6, 7 and 8 must not exceed the supply voltage on pin 1 (U+) (see operating instructions).
Pack quantity [piece]	1