



Model Number

NJ4-F-N

Features

- Comfort series
- 4 mm non-flush

Technical Data

General specifications

Switching function		Normally closed (NC)
Output type		NAMUR
Rated operating distance	s_n	4 mm
Installation		non-flush
Assured operating distance	s_a	0 ... 3.24 mm
Reduction factor r_{AI}		0.4
Reduction factor r_{Cu}		0.3
Reduction factor r_{304}		0.8
Output type		2-wire

Nominal ratings

Nominal voltage	U_o	8.2 V (R_i approx. 1 k Ω)
Switching frequency	f	0 ... 2000 Hz
Hysteresis	H	typ. %
Current consumption		
Measuring plate not detected		≥ 3 mA
Measuring plate detected		≤ 1 mA

Ambient conditions

Ambient temperature		-25 ... 100 °C (-13 ... 212 °F)
---------------------	--	---------------------------------

Mechanical specifications

Connection type		cable PVC , 2 m
Core cross-section		0.75 mm ²
Housing material		PA 6
Sensing face		PA 6
Degree of protection		IP67
Cable		
Bending radius		> 10 x cable diameter

General information

Use in the hazardous area		see instruction manuals
Category		1G; 2G

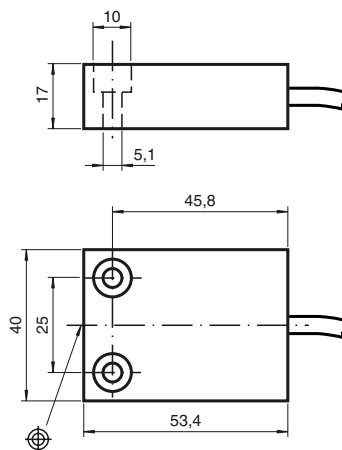
Compliance with standards and directives

Standard conformity		
NAMUR		EN 60947-5-6:2000 IEC 60947-5-6:1999
Standards		EN 60947-5-2:2007 IEC 60947-5-2:2007

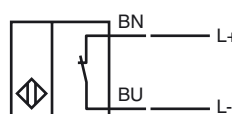
Approvals and certificates

FM approval		
Control drawing		116-0165
UL approval		cULus Listed, General Purpose
CSA approval		cCSAus Listed, General Purpose
CCC approval		CCC approval / marking not required for products rated ≤36 V

Dimensions



Electrical Connection



Equipment protection level GaCE marking **CE** 0102Effective internal inductivity C_i ≤ 150 nF ; a cable length of 10 m is considered.Effective internal inductance L_i ≤ 100 μ H ; a cable length of 10 m is considered.Highest permissible ambient temperature Details of the correlation between the type of circuit connected, the maximum permissible ambient temperature, the temperature class, and the effective internal reactance values can be found on the EU-type examination certificate.
Note: Use the temperature table for category 1 !!! The 20 % reduction in accordance with EN 1127-1 has already been applied to the temperature table for category 1.**Equipment protection level Gb**CE marking **CE** 0102Effective internal inductivity C_i ≤ 150 nF ; a cable length of 10 m is considered.Effective internal inductance L_i ≤ 100 μ H ; a cable length of 10 m is considered.Maximum permissible ambient temperature T_{amb} Details of the correlation between the type of circuit connected, the maximum permissible ambient temperature, the temperature class, and the effective internal reactance values can be found on the EU-type examination certificate.**Equipment protection level Da**CE marking **CE** 0102Effective internal inductivity C_i ≤ 150 μ F
A cable length of 10 m is considered.Effective internal inductance L_i ≤ 100 μ H
A cable length of 10 m is considered.