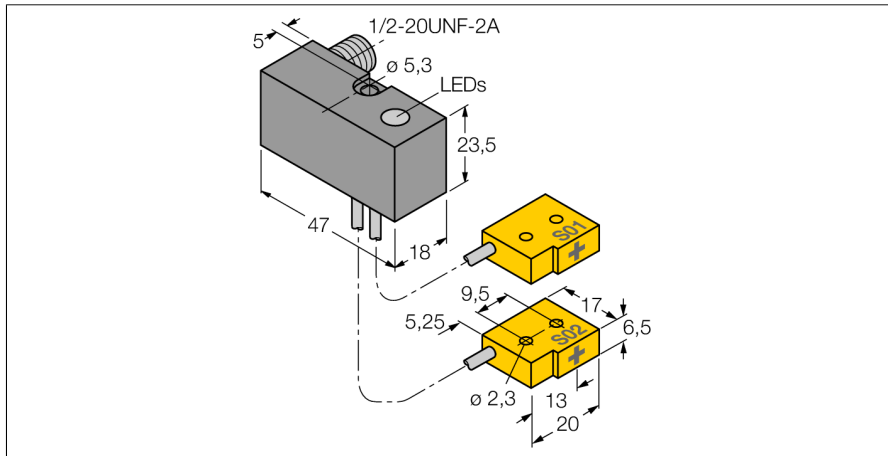
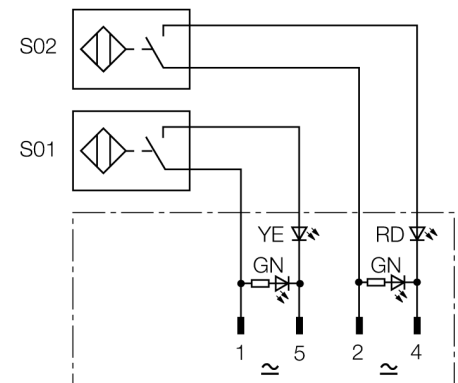


Inductive sensor
Monitoring Kit for Power Clamps
NI2-Q6.5-ADZ32-0.1-FSB5.4X4/S304



- Rectangular, height 23.5 mm
- Plastic, PBT-GF20-V0
- Resistant to magnetic fields (weld resistant), for DC and AC fields
- AC 4-wire, 20...250 VDC
- DC 4-wire, 10...300 VDC
- 2 x NO contact
- 1/2" male connector

Wiring Diagram



Functional principle

TURCK offers special monitoring kits, consisting of two miniature sensors, as a convenient solution for "Open/Closed" detection on pneumatic power clamps. This product line provides almost unlimited combination possibilities, comprising four different power blocks and over 40 different modular sensor types.

Type designation	NI2-Q6.5-ADZ32-0.1-FSB5.4X4/S304
Ident no.	4200204
Rated switching distance S_n	2 mm
Mounting conditions	Non-flush
Secured operating distance	$\leq (0,81 \times S_n)$ mm
Correction factors	St37 = 1; Al = 0.7; stainless steel = 0.75; Ms = 0.45
Repeat accuracy	$\leq 2\%$ of full scale
Temperature drift	$\leq \pm 10\%$
Hysteresis	3...15 %
Ambient temperature	-25...+70 °C
Operating voltage	20...250VAC
Operating voltage	10...300 VDC
AC rated operational current	≤ 100 mA
DC rated operational current	≤ 100 mA
Frequency	$\geq 50... \leq 60$ Hz
Residual current	≤ 1.7 mA
Isolation test voltage	≤ 1.5 kV
Surge current	≤ 1 A (≤ 10 ms max. 5 Hz)
Short-circuit protection	yes/ Latching
Voltage drop at I_n	≤ 6 V
Wire breakage/Reverse polarity protection	yes/ Complete
Output function	4-wire, 2 x NO contact
Reverse polarity protection	Complete
Smallest operating current I_m	≥ 3 mA
Switching frequency	0.02 kHz
Design	Monitoring kit for spanners, Q6.5
Dimensions	47 x 18 x 23.5 mm
Housing material	Metal, PBT-GF20-V0
Active area material	Plastic, PP GR-20
Electrical connection	Connector, 1/2"
Cable quality	2 mm, Gray, Lif9Y-11Y, PUR, 0.1m
Cable cross section	3 x 0.08 mm ²
Litz wire	40x0.05mm
Vibration resistance	55 Hz (1 mm)
Shock resistance	30 g (11 ms)
Protection class	IP67
MTTF	2283 years acc. to SN 29500 (Ed. 99) 40 °C
Power-on indication	2 x LEDs green
Switching state	LED yellow / red

Inductive sensor
Monitoring Kit for Power Clamps
NI2-Q6.5-ADZ32-0.1-FSB5.4X4/S304

Mounting instructions/Description	minimum distances
Distance D	3 x B
Distance W	3 x Sn
Distance S	1.5 x B
Distance G	6 x Sn
Distance N	2 x Sn

Width active area B 6.5 mm



Please note, non-flush mounting of this sensor is obligatory.

The following conditions allow semi-flush mounting:

N1 = 0 mm and S1 = 1 mm or

N1 = 1 mm and S1 = 0 mm

These values apply for mounting in aluminium

N1 = 0 mm and S1 = 5 mm or

N1 = 5 mm and S1 = 0 mm

These values apply for mounting in St37.

**Inductive sensor
Monitoring Kit for Power Clamps
NI2-Q6.5-ADZ32-0.1-FSB5.4X4/S304**

Wiring accessories

Type code	Ident no.	Description	
RKC4.4T-2/TEL	6625013	Connection cable, female M12, straight, 4-pin, cable length: 2 m, sheath material: PVC, black; cULus approval; other cable lengths and qualities available, see www.turck.com	