



Model Number

NBB3-V3-Z4-V5

Features

- 3 mm flush
- 2-wire DC

Technical Data

General specifications

Switching function		Normally open (NO)
Output type		Two-wire
Rated operating distance	s_n	3 mm
Installation		flush
Output polarity		DC
Assured operating distance	s_a	0 ... 2.4 mm
Actual operating distance	s_r	2.7 ... 3.3 mm typ.
Reduction factor r_{AI}		0.4
Reduction factor r_{Cu}		0.3
Reduction factor r_{304}		0.8

Nominal ratings

Operating voltage	U_B	5 ... 60 V DC
Switching frequency	f	0 ... 2000 Hz
Hysteresis	H	typ. 0.2 %
Reverse polarity protection		reverse polarity protected
Voltage drop	U_d	≤ 5 V
Voltage drop at I_L		Voltage drop $U_L = 10$ mA, switching element 0.8 ... 4.8 V typ. 3.8 V on U_d

Operating current	I_L	4 ... 100 mA
Lowest operating current	I_m	4 mA
Off-state current	I_r	0 ... 1 mA typ. 0.7 mA
Time delay before availability	t_v	≤ 1 ms
Switching state indicator		LED, yellow

Limit data

Tightening torque, fastening screws		0.4 Nm
-------------------------------------	--	--------

Ambient conditions

Ambient temperature		-25 ... 70 °C (-13 ... 158 °F)
---------------------	--	--------------------------------

Mechanical specifications

Connection type		4.8 mm Faston
Housing material		PBT
Sensing face		PBT
Degree of protection		IP67

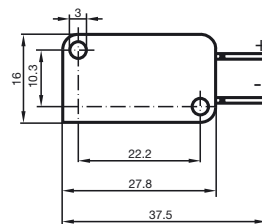
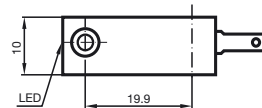
Compliance with standards and directives

Standard conformity		
Standards		EN 60947-5-2:2007 IEC 60947-5-2:2007

Approvals and certificates

UL approval		cULus Listed, General Purpose
CSA approval		cCSAus Listed, General Purpose
CCC approval		Certified by China Compulsory Certification (CCC)

Dimensions



Electrical Connection

