



### Model Number

MC60-12GM50-1N

### Features

- 60 mm flush with permanent magnet DM 60-31-15

### Accessories

#### BF 12

Mounting flange, 12 mm

#### EXG-12

Quick mounting bracket with dead stop

#### DM 60-31-15

Permanent magnet for magnetic field sensors

#### DM 25-32-07

Permanent magnet for magnetic field sensors

## Technical Data

### General specifications

Switching function		Normally open (NO)
Output type		NAMUR
Rated operating distance	$s_n$	60 mm
Installation		flush in non-magnetic metal
Assured operating distance	$s_a$	10 ... 48.6 mm
Output type		2-wire

### Nominal ratings

Nominal voltage	$U_o$	8.2 V ( $R_i$ approx. 1 k $\Omega$ )
Switching frequency	$f$	0 ... 5000 Hz
Current consumption		
Magnet detected		$\geq 2.5$ mA
Magnet not detected		$\leq 1$ mA
Switching state indicator		LED, yellow

### Functional safety related parameters

MTTF <sub>d</sub>	4382 a
-------------------	--------

### Ambient conditions

Ambient temperature	-25 ... 70 °C (-13 ... 158 °F)
---------------------	--------------------------------

### Mechanical specifications

Connection type	cable PVC , 2 m
Core cross-section	0.34 mm <sup>2</sup>
Housing material	stainless steel 1.4404 / AISI 316L
Sensing face	stainless steel 1.4404 / AISI 316L
Degree of protection	IP66 / IP67

### General information

Use in the hazardous area	see instruction manuals
Category	2G

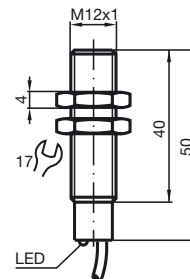
### Compliance with standards and directives

Standard conformity	
NAMUR	EN 60947-5-6:2000
Standards	EN 60947-5-2:2007

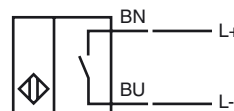
### Approvals and certificates

FM approval	
Control drawing	116-0165
CCC approval	CCC approval / marking not required for products rated $\leq 36$ V

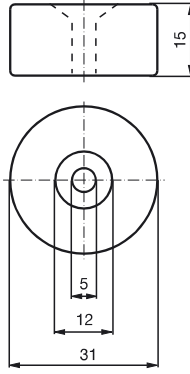
## Dimensions



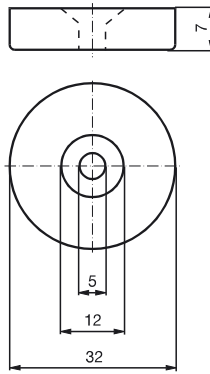
## Electrical Connection



**Magnet DM 60-31-15**



**Magnet DM 25-32-07**



Release date: 2017-05-22 11:40 Date of issue: 2017-05-22 18:13 | \_eng.xml



**Equipment protection level Gb**

CE marking

CE 0102

Effective internal inductivity

$C_i$

$\leq 15 \text{ nF}$  ; a cable length of 10 m is considered.

Effective internal inductance

$L_i$

$\leq 35 \text{ }\mu\text{H}$  ; a cable length of 10 m is considered.

Release date: 2017-05-22 11:40 Date of issue: 2017-05-22 18:131\_eng.xml

Refer to "General Notes Relating to Pepperl+Fuchs Product Information".

Pepperl+Fuchs Group  
www.pepperl-fuchs.com

USA: +1 330 486 0001  
fa-info@us.pepperl-fuchs.com

Germany: +49 621 776 4411  
fa-info@de.pepperl-fuchs.com

Singapore: +65 6779 9091  
fa-info@sg.pepperl-fuchs.com