



Model Number

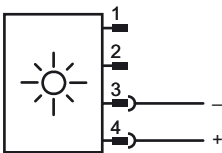
LED18-YYY-P

Yellow Pilot Light

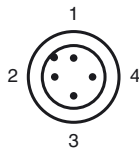
Features

- 12 to 24 V DC
- Yellow light

Connection



Pinout



Accessories

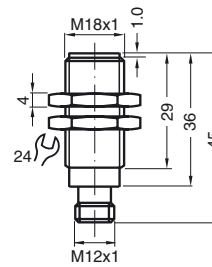
V1-G-2M-PVC

Cable socket, M12, 4-pin, PVC cable

V1-W-2M-PVC

Cable socket, M12, 4-pin, PVC cable

Dimensions



Technical Data

Electrical specifications

Operating voltage	U_B	12 ... 24 V DC
Operating current		12 V DC: 9 mA 24 V DC: 24 mA

Ambient conditions

Ambient temperature	0 ... 60 °C (32 ... 140 °F)
---------------------	-----------------------------

Mechanical specifications

Connection type	Device connector M12 x 1 4-pin
Protection degree	IP67
Material	brass, nickel-plated