

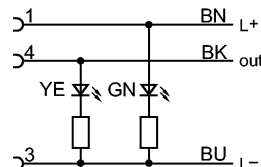
Product characteristics

Socket	
For sensors with	
M12 connector	
Electrical data	
Electrical design	DC PNP
Operating voltage [V]	10...30 DC
Environment	
Ambient temperature [°C]	-25...90
Protection	IP 68
Mechanical data	
Design	angled
Material body	TPU (urethane) transparent
Material nut	brass; nickel-plated
Tightening torque for knurled nut [Nm]	0.5
Displays / operating elements	
Output status indication LED	yellow
Power LED	green
Electrical connection	
Connection	PVC cable / 5 m; 3 x 0.34 mm <sup>2</sup> (42 x Ø 0.1 mm); Ø 5 mm
Sheath color	yellow

**Wiring**

Core colors

- BN brown
- BK black
- BU blue



Remarks

Pack quantity	[piece]	1
---------------	---------	---