

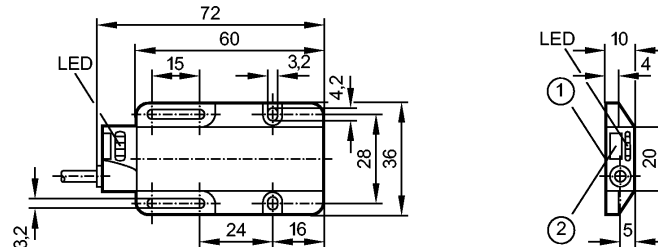
no longer available - archive entry

efectoriso

KN8513



Capacitive sensors



1: sensing face
2: teach-in element

Product characteristics

Level sensor

Rectangular, plastics

Cable with connector

Function check output

Adjustment to the empty and full state possible; [nf] non-flush mountable

Application

Application

For dry bulk materials and liquids, detection through non metal tank walls or bypass pipes. Optimised for media with a dielectric constant < 20 (e.g. oils).

Electrical data

Electrical design

DC NPN

Operating voltage [V]

10...36 DC

Current consumption [mA]

30 (24 V)

Protection class

II

Reverse polarity protection

yes

Outputs

Output function

normally open

Voltage drop

- Switching output [V]

< 2.5

- Function check output [V]

< 3.5

Current rating

- Switching output [mA]

150

- Function check output [mA]

10

Short-circuit protection

yes (non-latching)

Overload protection

yes

Switching frequency [Hz]

5

Environment

Ambient temperature [°C]

-25...80

Protection

IP 67

Tests / approvals

EMC

IEC 60947-5-2:

2007

Mechanical data

Mounting

non-flush mountable

Housing materials

PC; PBT

Displays / operating elements

Output status indication LED

yellow

Power LED

green

Function display LED

red

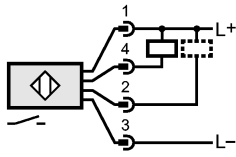
Electrical connection

Connection

PVC cable / 0.3 m; with Conxall connector

Wiring

KN8513 - Level sensor - eclass: 27371813 / 27-37-18-13



2: function check output / programming wire

Accessories

Accessories (included)

screwdriver

Remarks

Pack quantity

[piece]

1

ifm efector, inc. • 1100 Atwater Drive • Malvern • PA 19355 — We reserve the right to make technical alterations without prior notice. — US — KN8513 — 22.09.2005

no longer available - archive entry