

no longer available - archive entry

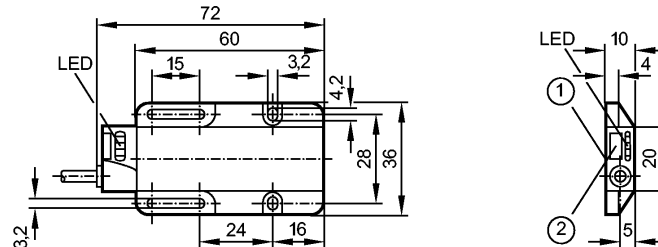
efectoriso

KN5116



KNQ01NUKFPKG

Capacitive sensors



1: sensing face
2: teach-in element



Product characteristics

Level sensor

Rectangular, plastics

Cable

Function check output

Programmable sensing range; [nfl] non-flush mountable

Application

Application For dry bulk material and liquids (detection through non-metallic vessel wall)

Electrical data

Electrical design	DC PNP
Operating voltage [V]	10...36 DC
Current consumption [mA]	30 (24 V)
Protection class	II
Reverse polarity protection	yes

Outputs

Output function normally open / closed programmable

Voltage drop

- Switching output [V]	< 2.5
- Function check output [V]	< 3.5

Current rating

- Switching output [mA]	150
- Function check output [mA]	10

Short-circuit protection	yes (non-latching)
Overload protection	yes
Switching frequency [Hz]	5

Environment

Ambient temperature [°C]	-25...80
Protection	IP 67

Tests / approvals

EMC	EN 60947-5-2
-----	--------------

Mechanical data

Mounting	non-flush mountable
Housing materials	PP (polypropylene); end cap: SAN
Weight [kg]	0.105

Displays / operating elements

Output status indication	LED	yellow
Power	LED	green
Function display	LED	red

Electrical connection

Connection	PVC cable / 2 m; 4 x 0.14 mm ²
------------	---

KN5116 - Level sensor - eclass: 27371813 / 27-37-18-13

Wiring

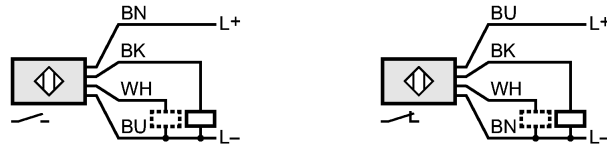
Core colors

BK black

BN brown

BU blue

WH white



WH: function check output / programming wire

Accessories

Accessories (included)

screwdriver

Remarks

Pack quantity

[piece]

1

ifm efector, inc. • 1100 Atwater Drive • Malvern • PA 19355 — We reserve the right to make technical alterations without prior notice. — US — KN5116 — 21.07.2004
no longer available - archive entry