

no longer available - archive entry Alternative article: IX5010

When selecting an alternative article and accessories please note that technical data may differ!

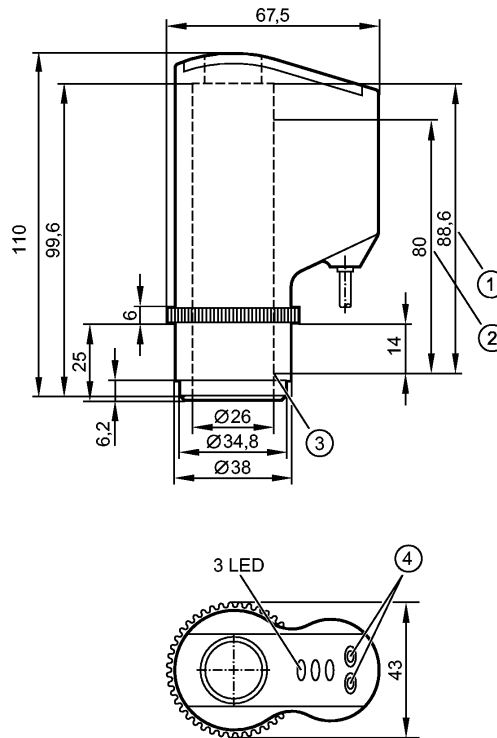
efector180

IX5008



IX-3080-BPKG/3LED/0.3M

Valve sensors



- 1: Max. spindle stroke
- 2: Measuring distance
- 3: Initial value of the measuring range (zero point)
- 4: Programming buttons



Product characteristics

Rising stem valve sensor

Cable

Position feedback for linear single and double seat valves

Absolute distance measurement

Monitoring of the valve seal

Measuring range 0...80 mm

Electrical data

Electrical design

DC PNP

Operating voltage [V]

18...36 DC

Current consumption [mA]

42 (24 V)

Protection class

III

Reverse polarity protection

yes

Outputs

Output function

3 x normally open

Voltage drop [V]

< 2.5

Current rating [mA]

100

Short-circuit protection

yes (non-latching)

Overload protection

yes

Monitoring range

Resolution [mm]

0.2

Measuring range [mm]

0..80

Max. target speed [m/s]

1

IX5008 - Rising stem valve sensor - eclass: 27220590 / 27-22-05-90

Target	cylindrical disc - Ø 24 mm ± 0.05 mm - minimum height 10 mm - flat surface - stainless steel to DIN 17440, material no. 316S12
Reaction times	
Power-on delay time [s]	2
Software / programming	
Programming options	3 switchpoints to be freely defined within the measuring range
Environment	
Ambient temperature [°C]	-25...85, firmly laid cable
Protection	IP 65 / IP 67; only in conjunction with an installation in the valve head that provides sufficient protection against mechanical damage of the sensor
Tests / approvals	
EMC	EN 61000-4-2 ESD: 4 kV CD / 8 kV AD EN 61000-4-3 HF radiated: 10 V/m EN 61000-4-4 Burst: 2 kV coupling clamp EN 61000-4-6 HF conducted: 3 V
Mechanical data	
Housing materials	PA; TPE; PP (polypropylene)
Weight [kg]	0.174
Displays / operating elements	
Output status indication LED	green (open), yellow (seat), red (close)
Electrical connection	
Connection	PVC cable / 0.3 m
Wiring	
Core colors	BK: OUT 1 seat WH: OUT 2 close GY: OUT 3 open
BK black	
BN brown	
BU blue	
GY grey	
WH white	
Accessories	
Accessories (included)	mounting clamp
Remarks	
Pack quantity [piece]	1

ifm efector, inc. • 1100 Atwater Drive • Malvern • PA 19355 — We reserve the right to make technical alterations without prior notice. — US — IX5008 — 20.07.2005

no longer available - archive entry Alternative article: IX5010

When selecting an alternative article and accessories please note that technical data may differ!