

no longer available - archive entry replaced by: IM510A

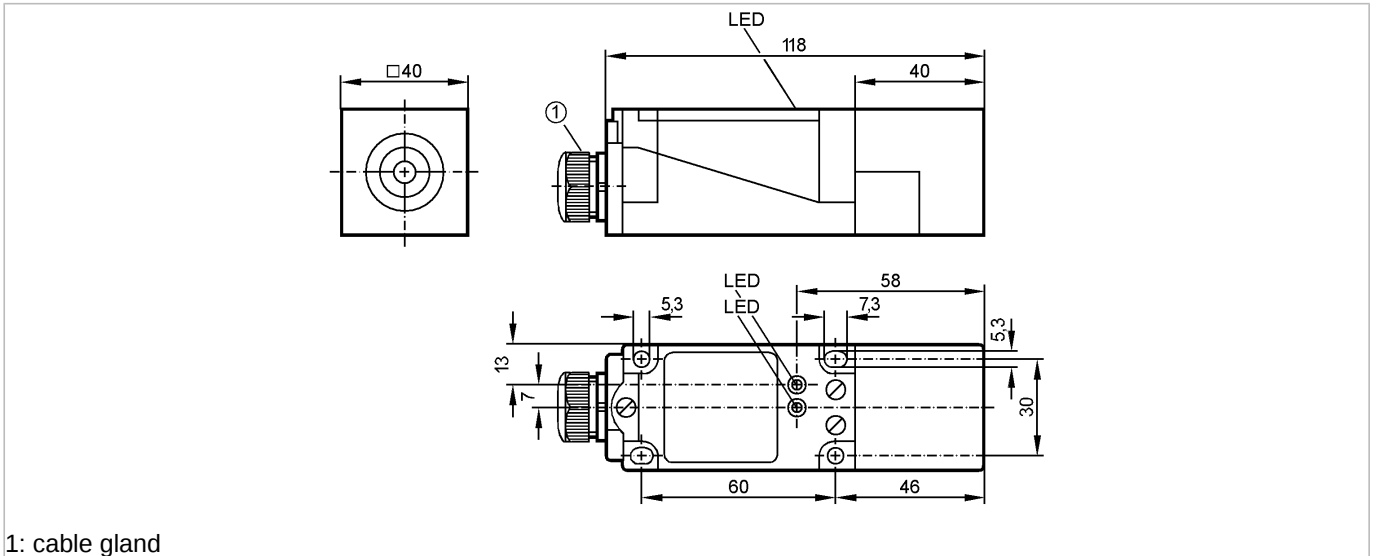
**efector100**

IV5014



IVE4015-CPKG/3D

Inductive sensors



1: cable gland



Product characteristics

Inductive sensor

Rectangular, plastics

Terminals

ATEX approval

Group II, category 3D

Sensing range 15 mm; [f] flush mountable

Electrical data

Electrical design

DC PNP

Operating voltage [V]

10...36 DC

Current consumption [mA]

20 (24 V)

Protection class

II

Reverse polarity protection

yes

Outputs

Output function

complementary

Voltage drop [V]

< 3

**Current rating**

- Current rating (continuous) [mA]

100

- Current rating (peak) [mA]

100

Short-circuit protection

yes (non-latching)

Overload protection

yes

Switching frequency [Hz]

300

Monitoring range

Sensing range [mm]

15

Real sensing range (Sr) [mm]

15 ± 10 %

Operating distance [mm]

0...12.1

Accuracy / deviations

Correction factors

mild steel = 1 / stainless steel approx. 0.85 / aluminium approx. 0.4 / copper approx. 0.3

Hysteresis [% of Sr]

1...15

Switch-point drift [% of Sr]

-10...10

Environment

Ambient temperature [°C]

-20...60

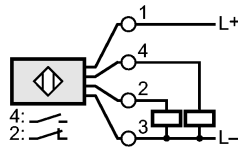
Protection

IP 54; IP 67 outside hazardous areas

# IV5014 - Inductive sensor - eclass: 27270101 / 27-27-01-01

Tests / approvals		
Marking of the unit		⊕ II 3D Ex tD A22 IP54 T80°C X
EMC		EN 60947-5-2
MTTF	[Years]	1076
Mechanical data		
Mounting		flush mountable
Housing materials		PBT
tightening torque for cable gland [Nm]		3.5
Weight	[kg]	0.251
Displays / operating elements		
Output status indication	LED	yellow
Power	LED	green
Electrical connection		
Connection		terminals up to 2.5 mm <sup>2</sup> ; cable diameter 5.5...13 mm, cable gland M20 x 1.5

## Wiring



Remarks		
Remarks		5 positions of the active zone possible
Pack quantity	[piece]	1

ifm efector, inc. • 1100 Atwater Drive • Malvern • PA 19355 — US — IV5014 — 03.12.2012  
 no longer available - archive entry replaced by: IM510A