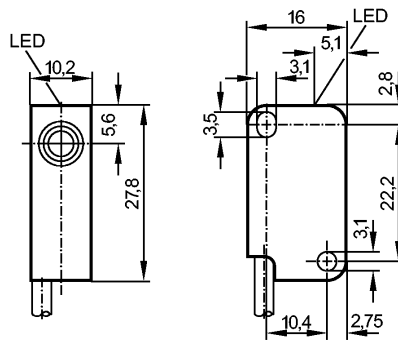


IS5026

IS-2002-FROG/PH

Inductive sensors



Product characteristics

Inductive sensor
Rectangular, plastics
Cable
Sensing range 2 mm; [f] flush mountable

Electrical data

Electrical design	DC PNP/NPN
Operating voltage [V]	5...36 DC; cULus - Class 2 source required
Protection class	III
Reverse polarity protection	no

Outputs

Output function	normally open / closed programmable
Voltage drop [V]	< 4.6
Minimum load current [mA]	4
Leakage current [mA]	< 0.8
Current rating [mA]	200
Short-circuit protection	no
Overload protection	no
Switching frequency [Hz]	2000

Monitoring range

Sensing range [mm]	2
Real sensing range (Sr) [mm]	2 ± 10 %
Operating distance [mm]	0...1.62

Accuracy / deviations

Correction factors	mild steel = 1 / stainless steel approx. 0.7 / brass approx. 0.4 / copper approx. 0.2 / aluminium approx. 0.3
Hysteresis [% of Sr]	1...15
Switch-point drift [% of Sr]	-10...10

Environment

Ambient temperature [°C]	-25...80
Protection	IP 67

Tests / approvals

EMC	EN 60947-5-2 EN 55011: class B
MTTF [Years]	3755

IS5026

IS-2002-FROG/PH

Inductive sensors

Mechanical data	
Mounting	flush mountable
Housing materials	PBT
Tightening torque [Nm]	< 0.5 (with washer)
Weight [kg]	0.039

Displays / operating elements	
Output status indication	LED
	yellow

Electrical connection	
Connection	PUR cable / 2 m; 2 x 0.14 mm ²

Wiring

Core colors
 BK black
 WH white



Remarks

Pack quantity	[piece]	1
---------------	---------	---