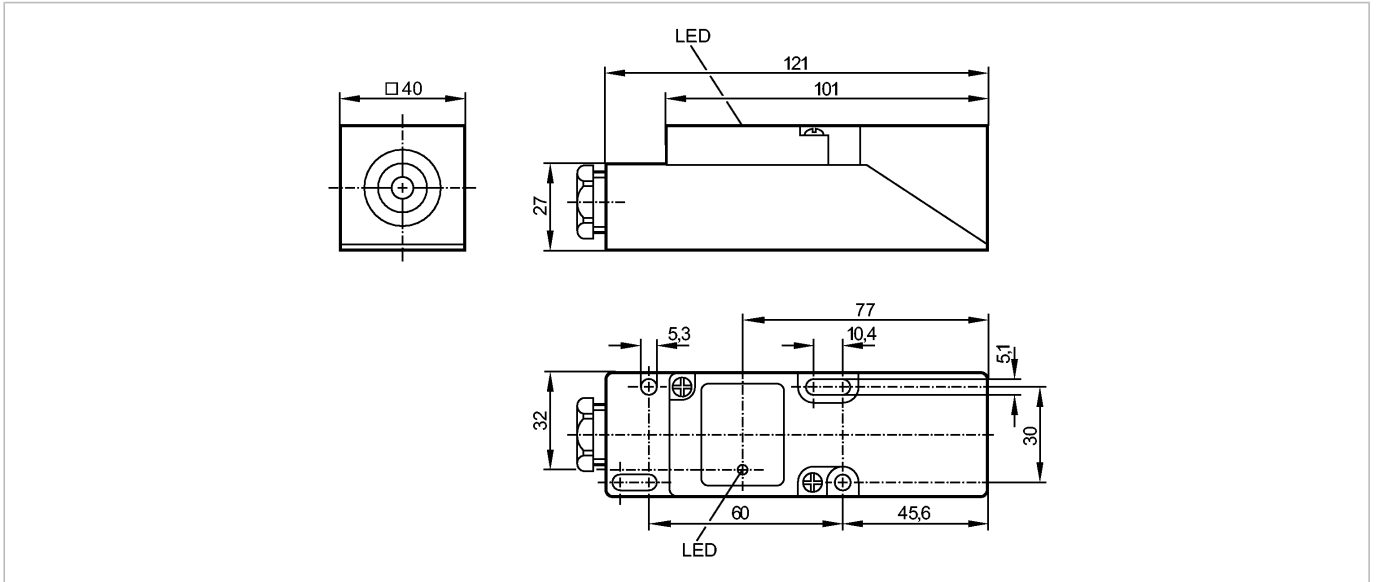


IME3015BFPKG

Inductive sensors



Product characteristics

Inductive sensor

Rectangular, plastics

Terminals

Sensing range 15 mm; [f] flush mountable

Electrical data

Electrical design

Operating voltage [V]

Current consumption [mA]

Protection class

Reverse polarity protection

Outputs

Output function

Voltage drop [V]

Current rating [mA]

Short-circuit protection

Overload protection

Switching frequency [Hz]

Monitoring range

Sensing range [mm]

Real sensing range (Sr) [mm]

Operating distance [mm]

Accuracy / deviations

Correction factors

Hysteresis [% of Sr]

Switch-point drift [% of Sr]

Environment

Ambient temperature [°C]

Protection

Tests / approvals

EMC

MTTF [Years]

Mechanical data

DC PNP

10...36 DC

15 (24 V)

II

yes

normally open / closed programmable

< 2.5

250

yes (non-latching)

yes

350

15

15 ± 10 %

0...12.1

mild steel = 1 / stainless steel approx. 0.7 / brass approx. 0.4 / aluminium approx. 0.3 / copper approx. 0.2

1...15

-10...10

-25...80

IP 65

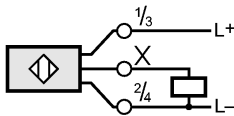
EN 60947-5-2

2234

IM5020 - Inductive sensor - eclass: 27270101 / 27-27-01-01

Mounting		flush mountable
Housing materials		PPE
Weight	[kg]	0.191
Displays / operating elements		
Output status indication	LED	yellow
Electrical connection		
Connection		terminals up to 2.5 mm ² ; cable diameter 7...13 mm, cable gland M20 x 1.5

Wiring



Remarks

Pack quantity	[piece]	1
---------------	---------	---

ifm efector, inc. • 1100 Atwater Drive • Malvern • PA 19355 — We reserve the right to make technical alterations without prior notice. — US — IM5020 — 06.03.2003