

no longer available - archive entry replaced by: IM512A

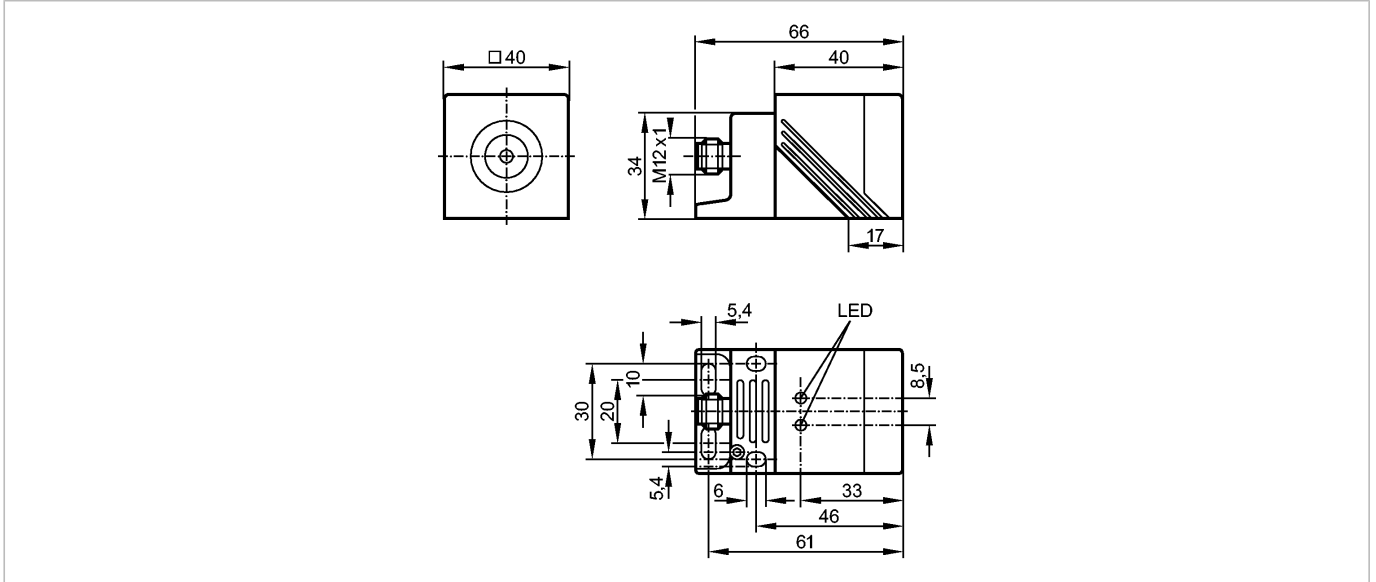
efector100

IM501A



IMC4020BCPKG/K1/US/3D

Inductive sensors



Product characteristics

Inductive sensor

Rectangular, plastics

Quick disconnect

Correction factor = 1

ATEX approval

Group II, category 3D

Sensing range 20 mm; [f] flush mountable

Electrical data

Electrical design

DC PNP

Operating voltage [V]

10...36 DC

Current consumption [mA]

20 (24 V)

Protection class

II

Reverse polarity protection

yes

Outputs

Output function

complementary

Voltage drop [V]

< 2.5

Current rating [mA]

200

Short-circuit protection

yes (non-latching)

Overload protection

yes

Switching frequency [Hz]

200

Monitoring range

Sensing range [mm]

20

Real sensing range (Sr) [mm]

20 ± 10 %

Operating distance [mm]

0...16.2

Accuracy / deviations

Correction factors

mild steel = 1 / stainless steel approx. 1.1 / brass approx. 1.1 / aluminium approx. 1.1 / Cu approx. 1.1

Hysteresis [% of Sr]

3...15

Switch-point drift [% of Sr]

-10...10

Environment

Ambient temperature [°C]

-20...60

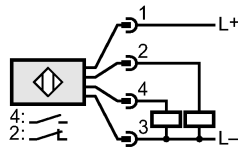
Protection

IP 67

IM501A - Inductive sensor - eclass: 27270101 / 27-27-01-01

Tests / approvals		
Marking of the unit		⊕ II 3D Ex tD A22 IP67 T80°C X
EMC		EN 60947-5-2
MTTF	[Years]	945
Mechanical data		
Mounting		flush mountable
Housing materials		housing: PPE; active face: PPE; end cap: PPS; connector housing: brass white bronze coated; bracket: PPS
Weight	[kg]	0.174
Displays / operating elements		
Output status indication	LED	yellow
Power	LED	green
Electrical connection		
Connection		M12 connector

Wiring



Remarks		
Pack quantity	[piece]	1

ifm efector, inc. • 1100 Atwater Drive • Malvern • PA 19355 — US — IM501A — 03.12.2012
 no longer available - archive entryreplaced by: IM512A