

no longer available - archive entryDiscontinued article

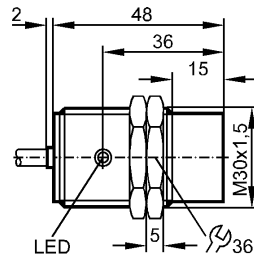
efector100

I15698



IIB2015-ARKG/UP

Inductive sensors



Product characteristics

Inductive sensor

Metal thread M30 x 1.5

Cable

Sensing range 15 mm; [nf] non-flush mountable

Electrical data

Electrical design

DC PNP/NPN

Operating voltage [V]

10...36 DC

Protection class

II

Reverse polarity protection

yes

Outputs

Output function

normally open

Voltage drop [V]

< 4.6

Minimum load current [mA]

4

Leakage current [mA]

< 0.8

Current rating [mA]

150

Short-circuit protection

yes (non-latching)

Overload protection

yes

Switching frequency [Hz]

200

Monitoring range

Sensing range [mm]

15

Real sensing range (Sr) [mm]

15 ± 10 %

Operating distance [mm]

0...12.1

Accuracy / deviations

Correction factors

mild steel = 1 / stainless steel approx. 0.7 / brass approx. 0.5 / aluminium approx. 0.4 / copper approx. 0.3

Hysteresis [% of Sr]

3...15

Switch-point drift [% of Sr]

-10...10

Environment

Ambient temperature [°C]

-25...80

Protection

IP 67

Tests / approvals

EMC

EN 60947-5-2

EN 55011:

class B

MTTF [Years]

2642

Mechanical data

Mounting

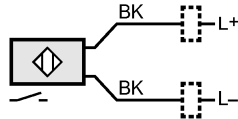
non-flush mountable

II5698 - Inductive sensor - eclass: 27270101 / 27-27-01-01

| | |
|-------------------------------|--|
| Housing materials | brass white bronze coated; PBT |
| Weight [kg] | 0.227 |
| Displays / operating elements | |
| Output status indication LED | yellow |
| Electrical connection | |
| Connection | PVC cable / 2 m; 2 x 0.5 mm ² |

Wiring

Core colors
BK black



| | |
|------------------------|-------------|
| Accessories | |
| Accessories (included) | 2 lock nuts |
| Remarks | |
| Pack quantity [piece] | 1 |

ifm efector, inc. • 1100 Atwater Drive • Malvern • PA 19355 — We reserve the right to make technical alterations without prior notice. — US — II5698 — 06.03.2003
no longer available - archive entryDiscontinued article