

Product characteristics

Inductive sensor

Metal thread M12 x 1

Quick disconnect

Full metal housing

Weld field immune *)

Increased sensing range

gold-plated contacts

Sensing range 4 mm; [f] flush mountable

Electrical data

Electrical design

DC PNP

Operating voltage [V]

10...36 DC

Current consumption [mA]

< 20

Protection class

III

Reverse polarity protection

yes

Outputs

Output function

normally open

Voltage drop [V]

< 2.5

Current rating [mA]

100

Short-circuit protection

yes (non-latching)

Overload protection

yes

Switching frequency [Hz]

2

Monitoring range

Sensing range [mm]

4

Operating distance [mm]

0...3.25

Accuracy / deviations

Correction factors

mild steel = 1 / stainless steel approx. 0.7 / brass approx. 0.2 / aluminium approx. 0.1 / copper = 0

Hysteresis [% of Sr]

1...20

Environment

Pressure rating [bar]

100; sensing face

Ambient temperature [°C]

0...85

Protection

IP 67

Tests / approvals

EMC

EN 61000-4-2 ESD: 4 kV CD / 8 kV AD
EN 61000-4-3 HF radiated: 10 V/m
EN 61000-4-4 Burst: 2 kV
EN 61000-4-6 HF conducted: 10 V
EN 55011 (Emission): class B

MTTF [Years]

1315

Mechanical data

Mounting

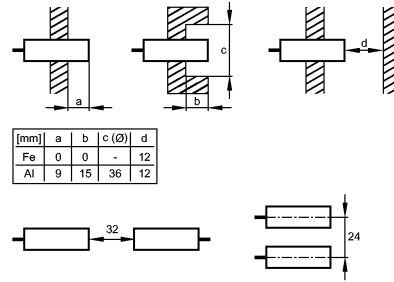
flush mountable

Housing materials

housing: stainless steel 316L / 1.4404 weld coated; active face: stainless steel 316L / 1.4404 weld coated; connector: PA; lock nuts: stainless steel 316L / 1.4404 weld coated

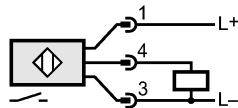
IFR200 - Inductive sensor - eclass: 27270101 / 27-27-01-01

Installation



Tightening torque	[Nm]	10
Weight	[kg]	0.036
Displays / operating elements		
Output status indication	LED	yellow (4 x 90°)
Power	LED	green
Electrical connection		
Connection		M12 connector; gold-plated contacts

Wiring



Accessories

Accessories (included)		2 lock nuts
------------------------	--	-------------

Remarks

Remarks		*) if pulse duration of the welding current < 200 ms
---------	--	--

Pack quantity	[piece]	1
---------------	---------	---