

no longer available - archive entry Alternative article: IF0008

When selecting an alternative article and accessories please note that technical data may differ!

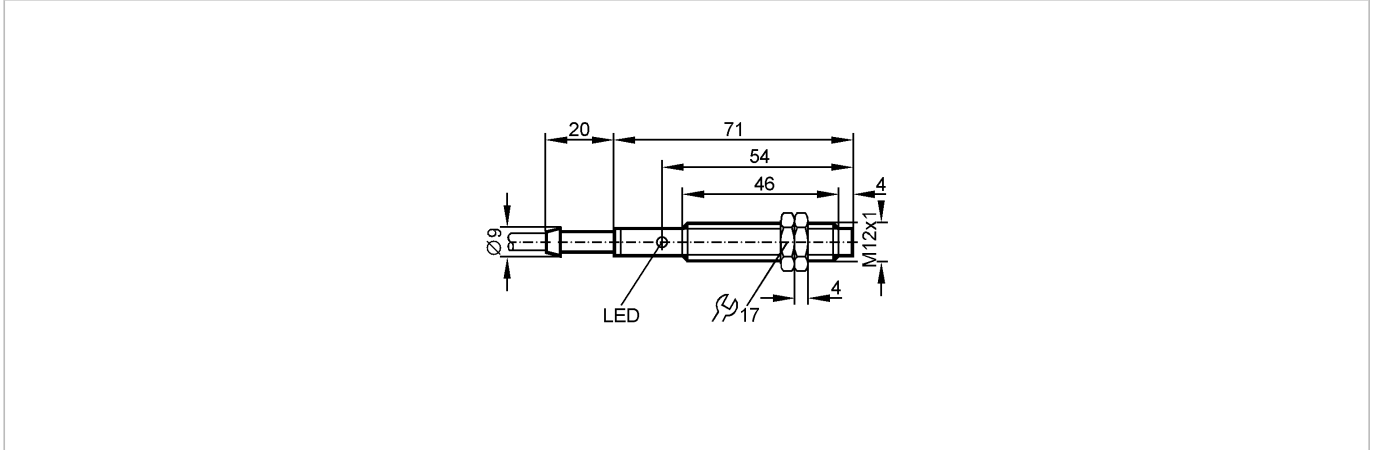
**efectorio**

IF0261



IFA2004-BBOW/V4A

Inductive sensors



Product characteristics

Inductive sensor

Metal thread M12 x 1

Cable

Sensing range 4 mm; [nfl] non-flush mountable

Electrical data

Electrical design

AC

Operating voltage [V]

20...250 AC (47...63 Hz)

Protection class

II

Reverse polarity protection

no

Outputs

Output function

normally closed

Voltage drop [V]

< 8.5

Minimum load current [mA]

8

Leakage current [mA]

< 3 (250 V AC) / < 1.5 (120 V AC)

**Current rating**

- Current rating (continuous) [mA]

200; 250 (...50 °C)

- Current rating (peak) [mA]

î: 0.9 A (20 ms / 0.5 Hz)

Short-circuit protection

no

Overload protection

no

Switching frequency [Hz]

25

Monitoring range

Sensing range [mm]

4

Real sensing range (Sr) [mm]

4 ± 10 %

Operating distance [mm]

0...3.25

Accuracy / deviations

Correction factors

mild steel = 1 / stainless steel approx. 0.7 / brass approx. 0.4 / aluminium approx. 0.4 / copper approx. 0.3

Hysteresis [% of Sr]

3...15

Switch-point drift [% of Sr]

-10...10

Environment

Ambient temperature [°C]

-25...80

Protection

IP 67

Tests / approvals

EMC

EN 60947-5-2

EN 55011:

class B

# IF0261 - Inductive sensor - eclass: 27270101 / 27-27-01-01

## Mechanical data

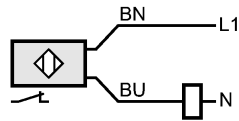
Mounting	non-flush mountable
Housing materials	stainless steel 316Ti / 1.4571; PBT (Pocan) uncolored
Weight [kg]	0.129
Displays / operating elements	
Output status indication LED	yellow
Electrical connection	
Connection	PVC cable / 2 m; 2 x 0.5 mm <sup>2</sup>

## Wiring

Core colors

BN brown

BU blue



## Accessories

Accessories (included)	2 lock nuts
Remarks	
Pack quantity [piece]	1

ifm efector, inc. • 1100 Atwater Drive • Malvern • PA 19355 — We reserve the right to make technical alterations without prior notice. — US — IF0261 — 06.03.2003

no longer available - archive entryAlternative article: IF0008

When selecting an alternative article and accessories please note that technical data may differ!