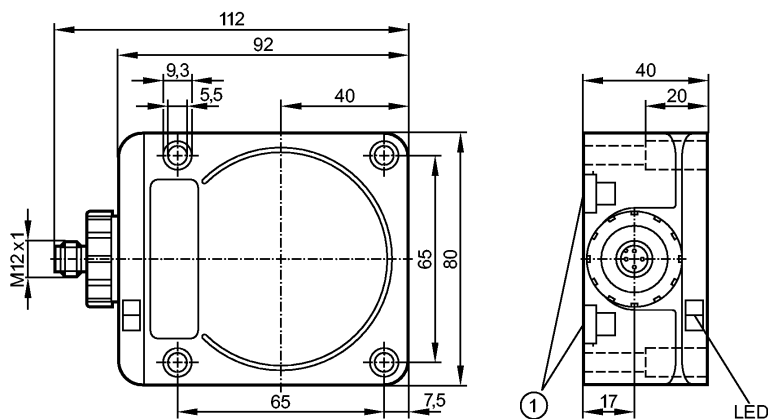


ID5055

IDC3050BBPKG/2LED/US-100-DPS

Inductive sensors



1: Mounting on DIN rail



Product characteristics

Inductive sensor
Rectangular, plastics
Quick disconnect
Sensing range 50 mm; [f] flush mountable

Electrical data

Electrical design	DC PNP
Operating voltage [V]	10...36 DC
Current consumption [mA]	15 (24 V)
Protection class	II
Reverse polarity protection	yes

Outputs

Output function	normally open
Voltage drop [V]	< 2.5
Current rating [mA]	250
Short-circuit protection	yes (non-latching)
Overload protection	yes
Switching frequency [Hz]	70

Monitoring range

Sensing range [mm]	50
Operating distance [mm]	0...40.5

Accuracy / deviations

Correction factors	mild steel = 1 / stainless steel approx. 0.85 / brass approx. 0.48 / aluminium approx. 0.46 / copper approx. 0.38	
Hysteresis [% of Sr]		3...20
Switch-point drift [% of Sr]		-15...15

Environment

Ambient temperature [°C]	-25...70
Protection	IP 67

Tests / approvals

EMC	EN 60947-5-2
MTTF [Years]	1588

Mechanical data

ID5055

IDC3050BBPKG/2LED/US-100-DPS

Inductive sensors

Mounting	flush mountable
Housing materials	PPE; diecast zinc nickel-plated
Installation	rail TH35 (to EN 60715)
Weight [kg]	0.417

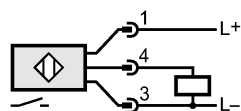
Displays / operating elements

Output status indication	LED	yellow
Power	LED	green

Electrical connection

Connection	M12 connector
------------	---------------

Wiring



Accessories

Accessories (included)	sealing plug
------------------------	--------------

Remarks

Pack quantity	[piece]	1
---------------	---------	---