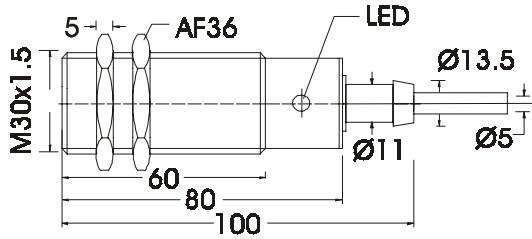


## INDUCTIVE PROXIMITY SWITCHES TYPE EGT 30X10AW



### TECHNICAL DATA

AC Operating Voltage	
Housing Material	Brass Nickel Plated
Environmental Protection	IP67
Mounting Position	Optional
Operating Temperature (deg.C)	-25 to + 70
Connection	Encapsulated oil resistant cable
Cable Length (mm)	2000 or 5000
Conductor Cross Section (mm)	0.5
Sensing Distance Sn (mm)	Flush Fitting = 10
Switch Point Hysteresis H (mm) ≤	1.0
Repeat Accuracy (mm) ≤	0.3
Operating Voltage (V)	90-250
Load Current Ia (mA) max. ≤	250 (90-250 V)
Inrush Current Ik (mA) 20 ms	1.5
Residual Current Ir (mA) ≤	3
Holding Current Ih (mA) ≥	10
Voltage Drop Ud(V) ≤	9 (90-250 V)
Internal Resistance Ri (Kohms)	-
Temperature Drift S (um/K) ≤	- 20
Switching Frequency (Hz)	10
Output Function	A=NO
Output Polarity	-
Status Indication	LED (see ordering code)

### Ordering Code

Sensing Distance Sn	Output Function	LED (optional)	Type	Connection Diagram
10	A	X	EGT 30X10AW220-	5

Specify Cable Length Required (2000 or 5000)

Specify Status indication LED (L) following Cable Length

Ordering Example: EGT 30X10..Flush Fitting, NO,90-250 VAC, 2m Cable Length, with LED  
EGT 30X10AW220 – 2000L