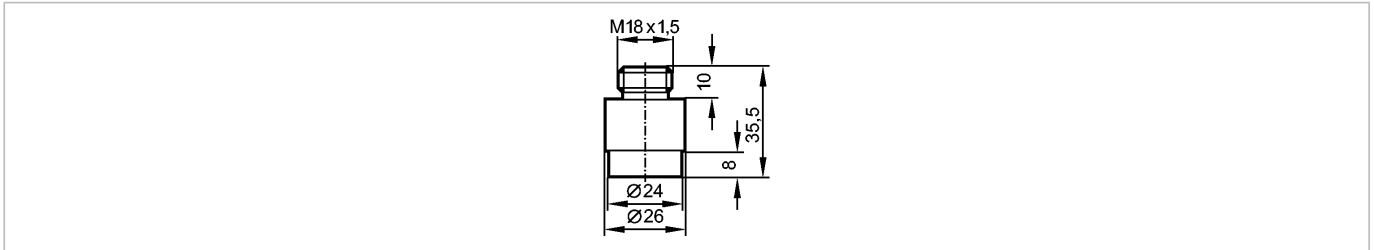




WELDING ADAPTER SID V4A

Accessories



**Reg31**

Product characteristics

Welding adapter

M18 x 1.5 - Ø 24 mm

Insertion depth of the probe of SID, SFD, TN:

15 mm

Application

Application

Liquids and gases of the fluid group 2 according to the Pressure Equipment Directive (PED)

Environment

Pressure rating

[bar]

300

Tests / approvals

Pressure equipment directive

article 3, section 3 - sound engineering practice

Mechanical data

Process connection

Welding adapter Ø 24 mm

for units with process connection

M18 x 1.5

Housing materials

stainless steel 316L / 1.4404

Weight

[kg]

0.092

Remarks

Pack quantity

[piece]

1