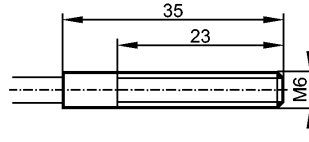




FT-11-EPA-M6/F613X0.06/2M

Fiber optics



Product characteristics
Diffuse reflection sensor

M6

Amplifier Range
OB50xx 70 mm
OBFxxx 104 mm
OO50xx 180 mm

Monitoring range

Range

OB50xx: 70 mm / OBFxxx: 104 mm / OO50xx: 180 mm

Environment

Ambient temperature [°C]

-40...60

Mechanical data

Design

straight

Length [mm]

2000

Min. bending radius [mm]

3

Fiber arrangement



core diameter [mm]

1.2

Fibre diameter [mm]

2x 613 x 0.06

Outer diameter [mm]

2.2

Fiber optic

PMMA

Sensing head

aluminum

Sheathing

PE (polyethylene)

Weight [kg]

0.048

Accessories

Accessories (included)

2 hexagon nuts; M6; stainless steel; 2 tooth lock washers

Accessories (optional)

cutter E20600 for fibre optics (to be ordered separately)

Remarks

Pack quantity [piece]

1