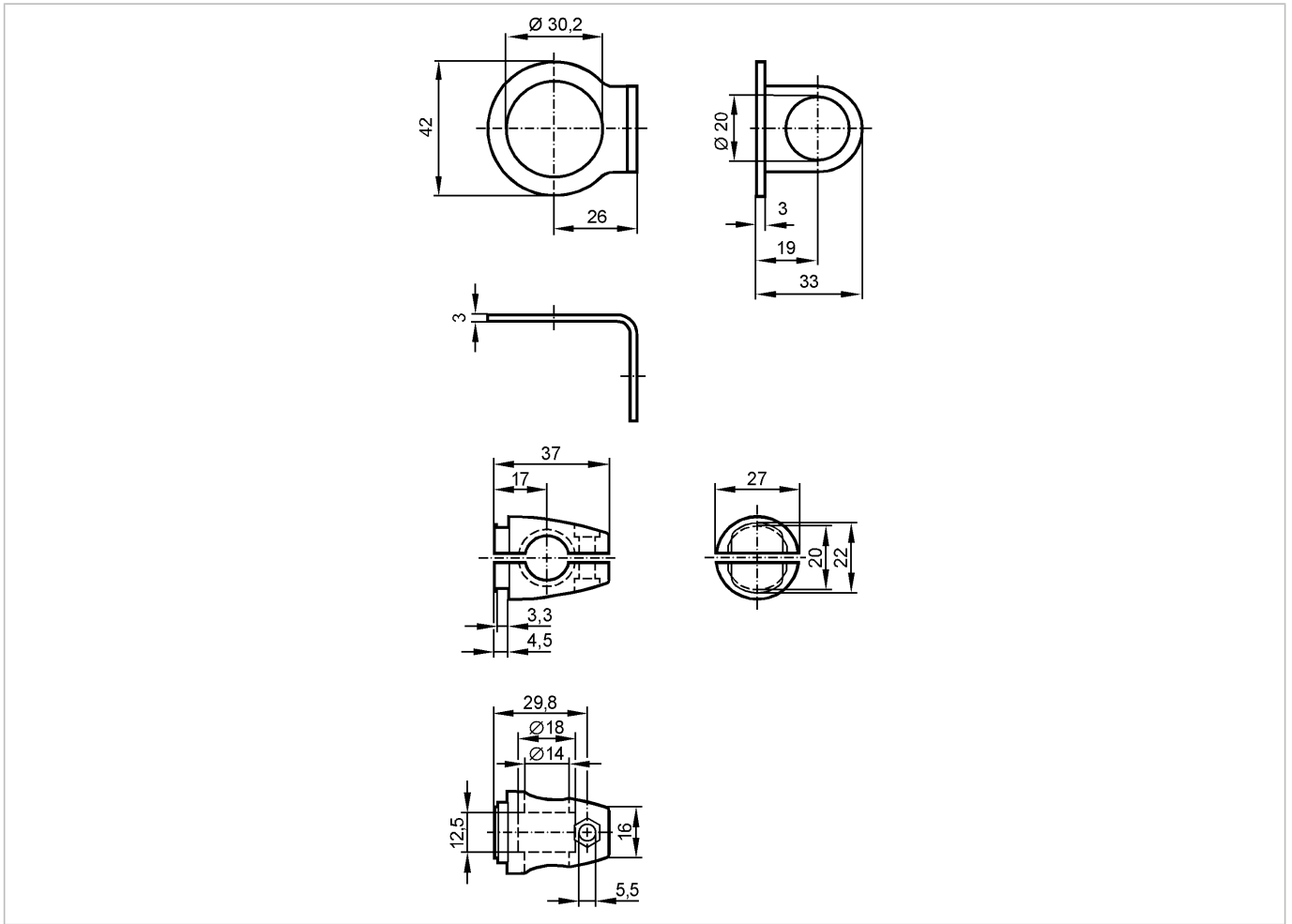


E20873

SYSTEM COMPONENT M30 BOLT

Accessories



Product characteristics

Mounting set

$\text{Ø } 30,2$ mm

Clamp mounting

Mechanical data

Design	for types OI, II, KI
Housing materials	fixture: stainless steel 316Ti / 1.4571; clamp: diecast zinc
Type of mounting	free-standing M12
Weight [kg]	0.202

Accessories

Accessories (included)	screw; M12 x 55
------------------------	-----------------

Remarks

Pack quantity [piece]	1
-----------------------	---