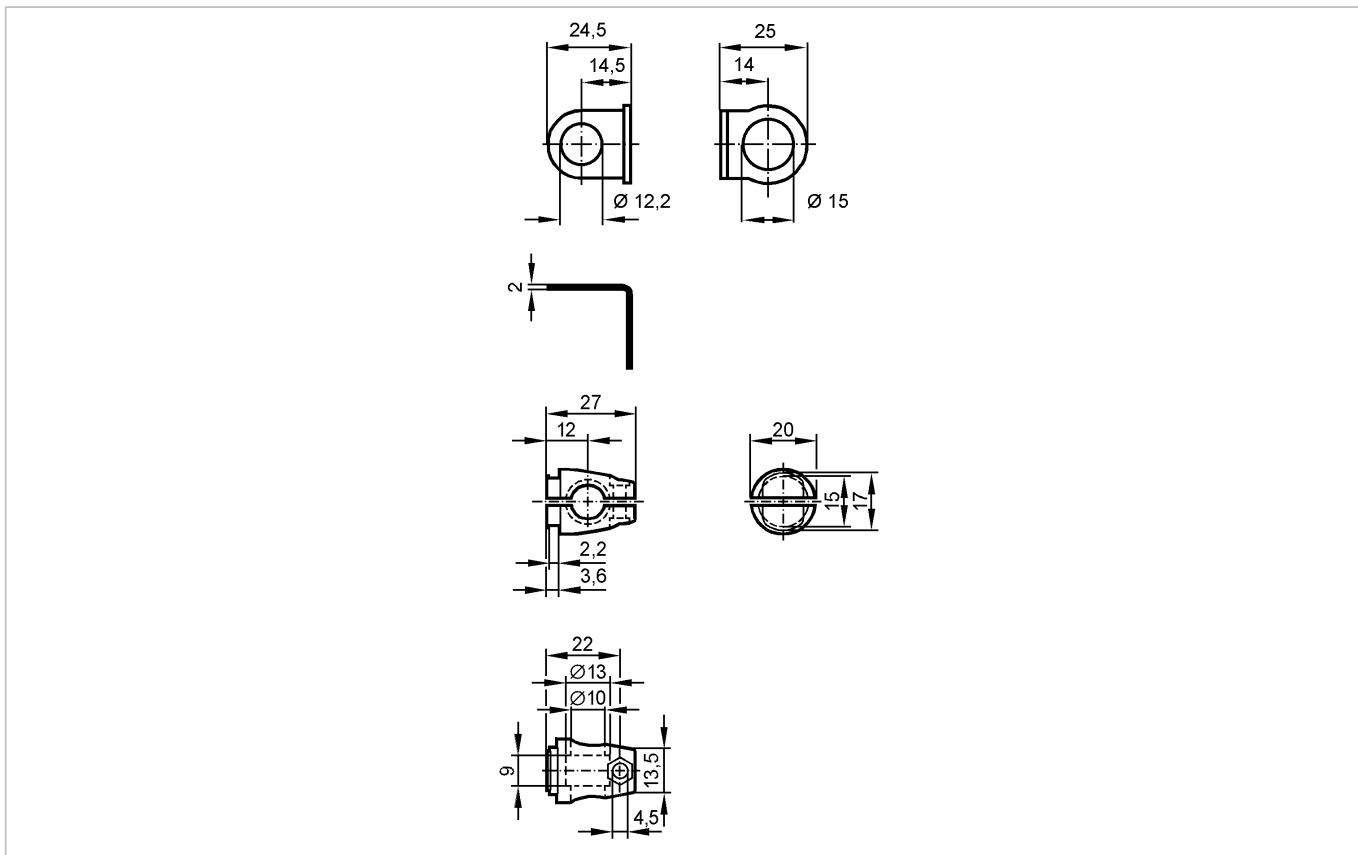


E20860

SYSTEM COMPONENT M12 BOLT

Accessories



Product characteristics

Mounting set	
Ø 12.2 mm	
Clamp mounting	

Mechanical data

Design	for types OF, IF
Housing materials	fixture: stainless steel 316Ti / 1.4571; clamp: diecast zinc
Type of mounting	free-standing M8
Weight [kg]	0.08

Accessories

Accessories (included)	screw; M8 x 40
------------------------	----------------

Remarks

Pack quantity [piece]	1
-----------------------	---