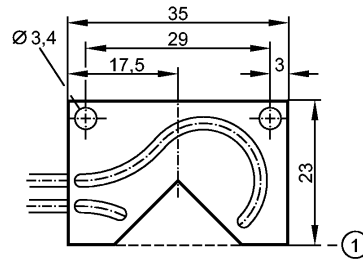




FT-11-EPA-Q-/F2x1/2M

Fiber optics



1: Reference edge

Product characteristics

Diffuse reflection sensor

5 x 35 x 23

Background suppression

Amplifier Range

OB50xx 6 mm

OBFxxx 10 mm

Monitoring range

Range

OB50xx: 6 mm / OBFxxx: 10 mm

Environment

Ambient temperature [°C]

-40...70

Mechanical data

Length [mm]

2000

Min. bending radius [mm]

10

Fiber arrangement



core diameter [mm]

2 x 1 mm

Fiber optic

PMMA

Sensing head

aluminum; black anodized

Sheathing

PE (polyethylene)

Weight [kg]

0.053

Accessories

Accessories (optional)

cutter E20600 for fibre optics (to be ordered separately)

Remarks

Pack quantity [piece]

1