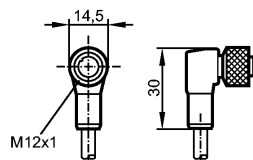


no longer available - archive entry

replaced by: EVC531
Discontinued article



Product characteristics

Socket

For sensors with

M12 connector

Electrical data

Electrical design DC

Operating voltage [V] 250 DC

Environment

Ambient temperature [°C] -40...90

Protection IP 68

Mechanical data

Design angled

Material body PUR

Material nut brass; nickel-plated

Tightening torque for knurled nut [Nm] 0.5

Electrical connection

Connection PVC cable / 10 m; 4 x AWG 22 (4 x 0.34 mm²); Ø 5.6 mm; with drain wire

Sheath color yellow

Wiring

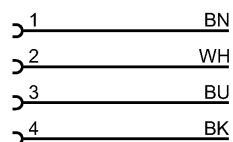
Core colors

BN brown

BK black

BU blue

WH white



Remarks

Pack quantity [piece] 1

ifm efector, inc. • 1100 Atwater Drive • Malvern • PA 19355 — We reserve the right to make technical alterations without prior notice. — US — E18306 — 13.06.2008

no longer available - archive entry

replaced by: EVC531
Discontinued article