

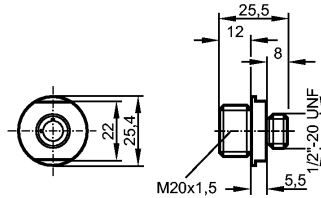
no longer available - archive entry

ecomat 400

E18252



Connection technology



1: O-ring

Product characteristics

Bulkhead connector

1/2" connector

gold-plated contacts

thread M20 x 1.5

Electrical data

Electrical design

AC/DC

Operating voltage [V]

250 AC/DC

Environment

Ambient temperature [°C]

-20...80

Protection

IP 68

Mechanical data

Design

straight

Housing materials

aluminum anodized

Electrical connection

Connection

PVC cable / 0.3 m; 4 x AWG 22 (4 x 0.34 mm²)

Wiring

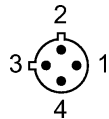
Core colors

BK black

GN green

RD red

WH white



1 RD/BK

2 RD/WH

3 RD

4 GN

Remarks

Pack quantity

[piece]

1

ifm efector, inc. • 1100 Atwater Drive • Malvern • PA 19355 — We reserve the right to make technical alterations without prior notice. — US — E18252 — 19.07.2006

no longer available - archive entry