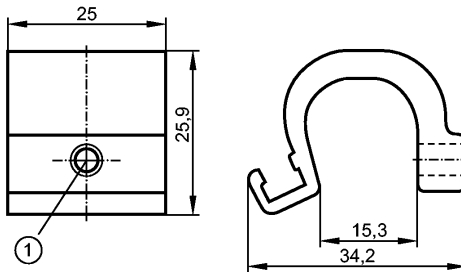




ADAPT TIE ROD/PROFILE/CYL

Accessories



1: fixing screw across flats 2.5

Product characteristics

Adapter for Tie Rod / Integrated Profile Cylinders

Mechanical data

Design	for types MKT (T-slot cylinder sensors)	
Housing materials	aluminum; screw: stainless steel	
Rod Diameter	[mm]	9...15
Weight	[kg]	0.021
Remarks		
Pack quantity	[piece]	1