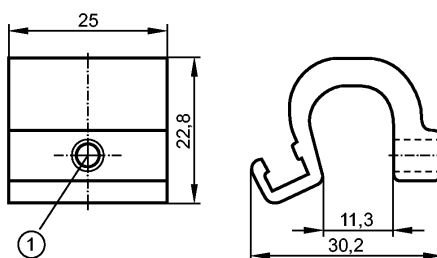


E11797

ADAPT TIE ROD/PROFILE CYL

Accessories



1: fixing screw across flats 2.5

Product characteristics

Adapter for Tie Rod / Integrated Profile Cylinders

Mechanical data

Design	for types MKT (T-slot cylinder sensors)
Housing materials	aluminum; screw: stainless steel
Rod Diameter [mm]	5...11
Weight [kg]	0.02

Remarks

Pack quantity [piece]	1
-----------------------	---