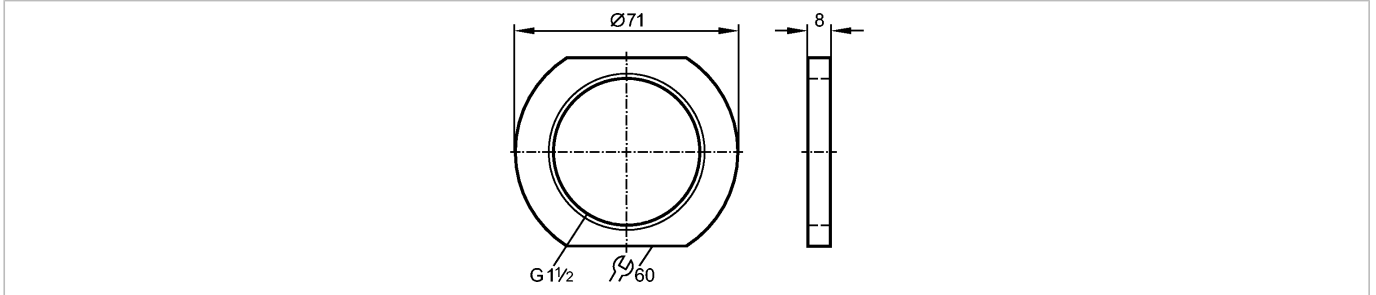




NUT MOUNTING ADAPTER POM

Accessories



Product characteristics	
Locknut	
G 1½	
Environment	
Ambient temperature [°C]	-25...80
Mechanical data	
Process connection	G 1½
Design	for mounting adapter
Housing materials	POM (polyoxymethylene)
Weight [kg]	0.023
Remarks	
Pack quantity [piece]	1