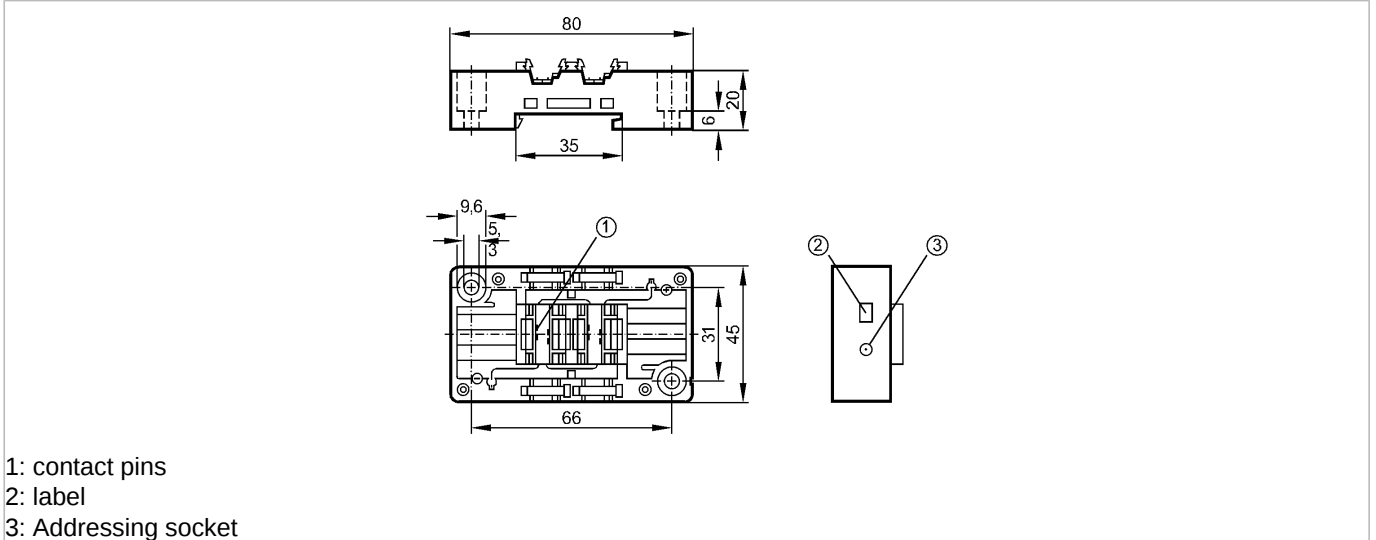




EEMS-Base FC Addressing socket

AS-Interface bus system



Product characteristics

FC-E coupling module

Mounting on DIN rail and panel

Quick mounting technology for AS-i flat cable

with addressing plug

AS-i interface to module upper part

Electrical data

Electrical design

FC-E coupling module with external power supply

Operating voltage

[V]

26.5...31.6 DC (AS-i) / 24 DC

Environment

Ambient temperature

[°C]

-25...85

Protection

IP 67; IP 20 / IP 65 / IP 67 depending on the upper part used

Mechanical data

Housing materials

PBT (Pocan)

Weight

[kg]

0.062

Electrical connection

Connection

via contact pins in the unit

Contact rating

< 2 A

Remarks

Pack quantity

[piece]

1