

no longer available - archive entryreplaced by: AC5101

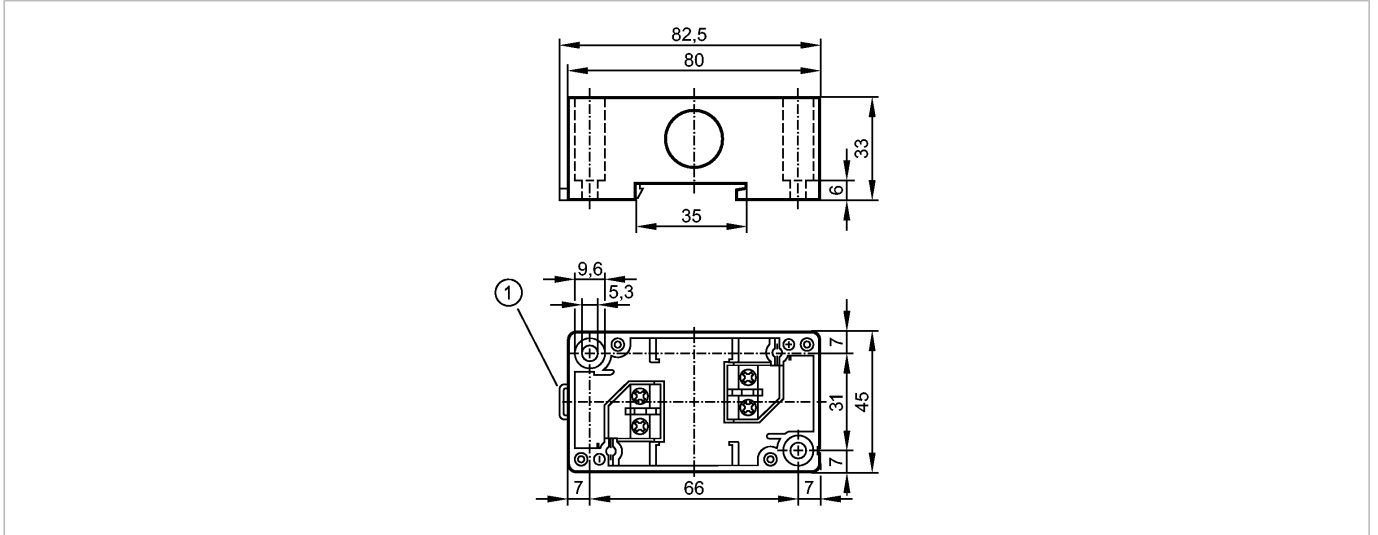
ecomat300

AC5001



ASI-MODUL-UNTERTEIL PG

AS-Interface bus system



Product characteristics

Module lower part screw connection

Mounting on DIN rail and panel

Screw terminal

AS-i interface to module upper part

Electrical data

Electrical design

SC coupling module

Operating voltage [V]

26.5...31.6 DC

Environment

Ambient temperature [°C]

-25...85

Protection

IP 65

Mechanical data

Housing materials

PBT (Pocan)

Weight [kg]

0.073

Electrical connection

Connection

terminals up to 2.5 mm²

Contact rating

< 4 A

Remarks

Remarks

up to 4 screw connction outgoing cables for any type of T or cross branch

Pack quantity [piece]

1

ifm efector, inc. • 1100 Atwater Drive • Malvern • PA 19355 — We reserve the right to make technical alterations without prior notice. — US — AC5001 — 09.05.2005

no longer available - archive entryreplaced by: AC5101