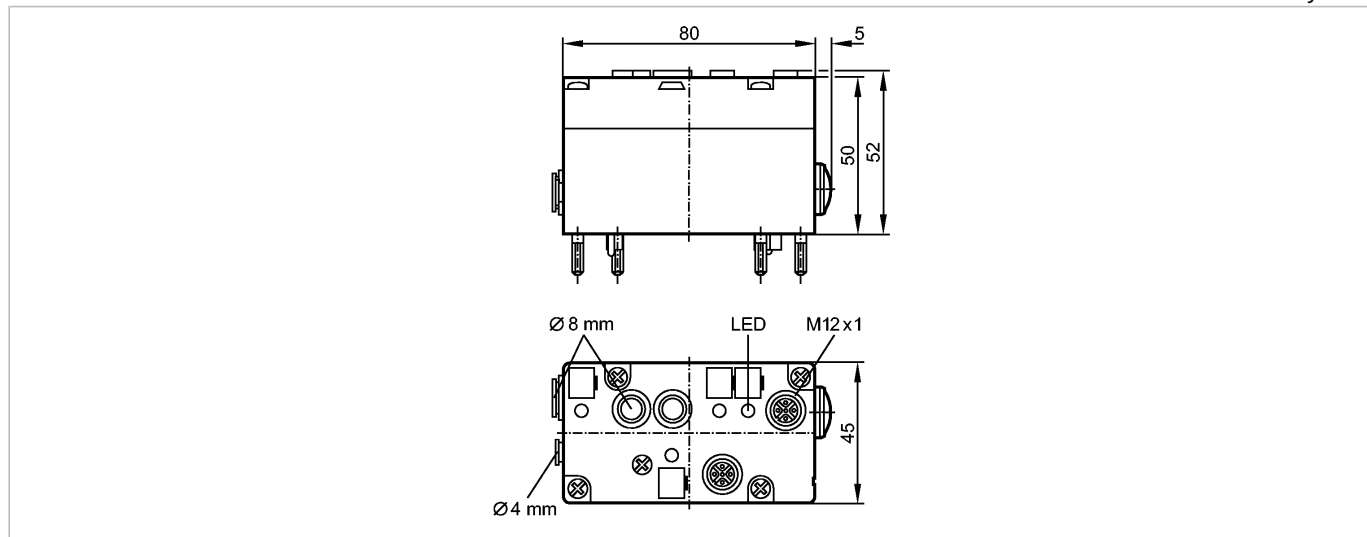




AirBox 2DI 1PO M12

AS-Interface bus system



Product characteristics

AS-i AirBox

AS-i interface to FC lower parts

Sockets M12 x 1

Connection to the pneumatic system by tube fittings

1 x 2 or 2 x 1 digital inputs

1 pneumatic output (NO/NC selectable)

Electrical data

Electrical design

2 inputs / 1 output NO/NC selectable (monostable)

Operating voltage [V]

26.5...31.6 DC

Total current consumption from AS-i [mA]

< 165

Inputs

digital

Circuit

PNP

Sensor supply

AS-i

Voltage range [V]

20...30 DC

Max. current load for all inputs total [mA]

100

Input current High/Low [mA]

> 3 / < 1.5

Switching level High signal 1 [V]

> 10

Short-circuit proof

yes

Outputs

digital

Output function

integrated exhaust

Integrated watchdog

yes

Environment

Ambient temperature [°C]

0...55, use below 0 °C possible with a special compressed air treatment

Protection

IP 65

Tests / approvals

EMC

EN 50295

AS-i classification

AS-i profile

S-3.F

I/O configuration [hex]

3

ID code [Hex]

F

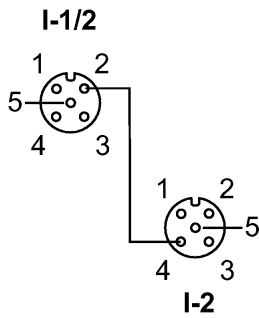
AS-i certificate

in preparation

AC2046 - AS-i AirBox - eclass: 27242613 / 27-24-26-13

Data bits	Data bit	D0	D1	D2	D3
	socket	I-1 / pin 4	I-1 / pin2; I-2 / pin 4	O-3	—
Mechanical data					
Pneumatic system	one 4/2-way seat valve				
Operating pressure range [bar]	3...8 *)				
Air flow at 6/5 bar [Nl/min]	500				
Air flow at 6/0 bar [Nl/min]	700				
Permissible compressed air	filtered (5 µm); lubricated (ISO-VG10) or not lubricated				
Auxiliary air 90 % vacuum [bar]	3...8				
Tube fitting [type/mm]	Legris LF 3000/8 / LF 3000/4				
Housing materials	PBT				
Weight [kg]	0.244				
Displays / operating elements					
Power LED	green				
Function display LED	yellow				
Electrical connection					
Connection	contact pins on FC or SC lower module				

Wiring



- Input
- Socket I-1/2
- 1: Sensor supply L+
 - 2: Data input 2
 - 3: Sensor supply L-
 - 4: Data input 1
 - 5: not used
- Socket I-2
- 1: Sensor supply L+
 - 2: not used
 - 3: Sensor supply L-
 - 4: Data input 2
 - 5: not used

Remarks	
Remarks	*) incl. possible pressure peaks Notes on compressed air and EMC/ESD at www.ifm.com
Pack quantity [piece]	1