

Alternative article: AC2086

When selecting an alternative article and accessories please note that technical data may differ!

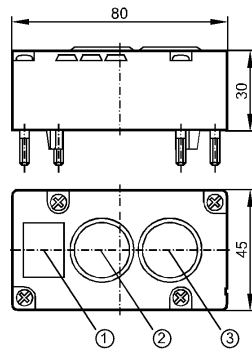
ecomat300

AC2026



EMS Module 2BI 2LO

AS-Interface bus system



- 1: label
- 2: pushbutton/LED
- 3: pushbutton/LED



Product characteristics

Active module upper parts AS-i illuminated pushbutton module

AS-i interface to FC and SC lower parts

Power supply via AS-i cable

Color inserts changeable

Electrical data

Electrical design

2 pushbuttons / 2 LED displays

Operating voltage [V]

26.5...31.6 DC

Total current consumption from AS-i [mA]

< 55

Inputs

digital

Sensor supply

AS-i

Environment

Ambient temperature [°C]

-25...60

Protection

IP 67

Tests / approvals

EMC

EN 50295

MTTF [Years]

1661

AS-i classification

AS-i version

2.1

Extended addressing mode possible

no

AS-i profile

S-3.F.F

I/O configuration [hex]

3

ID code [Hex]

F.F

AS-i certificate

04801

Data bits

Data bit	D0	D1	D2	D3
Allocation	push-button 2	push-button 1	LED 2 (white)	LED 1 (white)

Mechanical data

Housing materials

PBT (Pocan)

Weight [kg]

0.101

Electrical connection

Connection

contact pins on FC or SC lower module

Remarks

AC2026 - Active module upper parts AS-i illuminated pushbutton module - eclass: 27259090 / 27-25-90-90

Remarks

The pushbuttons (EAO type 84) provide protection against accidental contact. Housing and pushbuttons can be labelled.

Accessories: 2 cover supports, 10 cover upper parts (2 x red, 2 x green, 2 x yellow, 2 x blue, 2 x white)

Pack quantity [piece]

1

ifm efector, inc. • 1100 Atwater Drive • Malvern • PA 19355 — We reserve the right to make technical alterations without prior notice. — US — AC2026 — 12.02.2015

Alternative article: AC2086

When selecting an alternative article and accessories please note that technical data may differ!