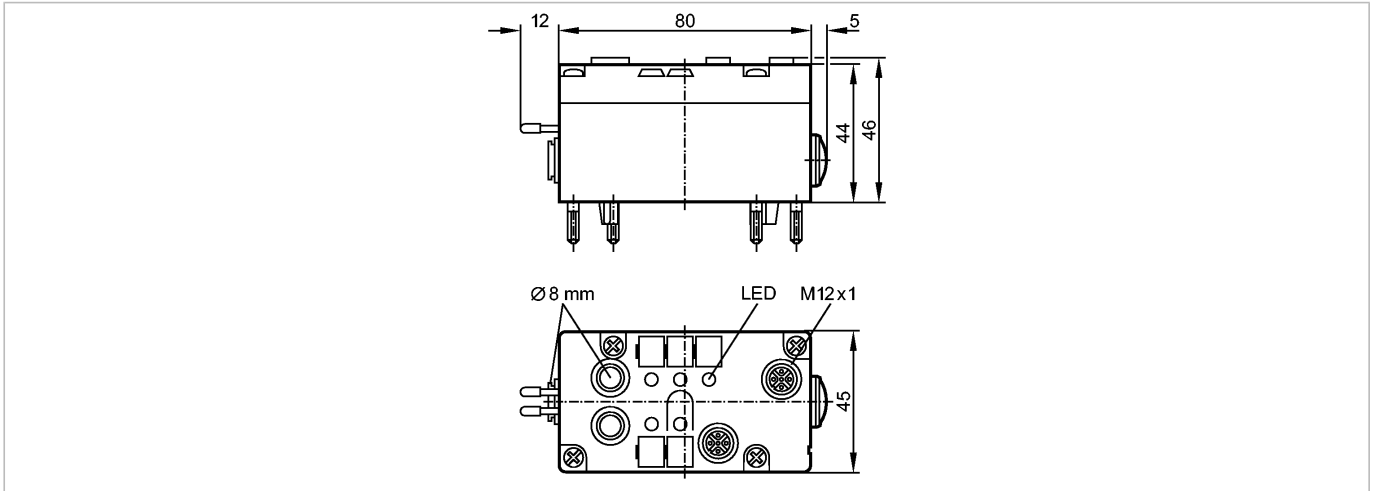




AirBox 2DI 2PO M12

AS-Interface bus system



Product characteristics

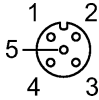
AS-i AirBox											
AS-i interface to FC and SC lower parts											
Sockets M12 x 1											
2 digital inputs											
2 pneumatic outputs											
Electrical data											
Electrical design	2 inputs / 2 outputs										
Operating voltage [V]	26.5...31.6 DC										
Total current consumption from AS-i [mA]	< 150										
Inputs											
digital											
Circuit	PNP										
Sensor supply	AS-i										
Voltage range [V]	20...30 DC										
Max. current load for all inputs total [mA]	100										
Input current High/Low [mA]	> 3 / < 1.5										
Switching level High signal 1 [V]	> 10										
Short-circuit proof	yes										
Outputs											
digital											
Output function	integrated exhaust										
Integrated watchdog	yes										
Environment											
Ambient temperature [°C]	0...55, use below 0 °C possible with a special compressed air treatment										
Protection	IP 65										
Tests / approvals											
EMC	EN 50295										
AS-i classification											
AS-i profile	S-3.F										
I/O configuration [hex]	3										
ID code [Hex]	F										
AS-i certificate	10501										
Data bits	<table border="1"> <thead> <tr> <th>Data bit</th> <th>D0</th> <th>D1</th> <th>D2</th> <th>D3</th> </tr> </thead> <tbody> <tr> <td>In-/Outputs</td> <td>I-1</td> <td>I-2</td> <td>O-3</td> <td>O-4</td> </tr> </tbody> </table>	Data bit	D0	D1	D2	D3	In-/Outputs	I-1	I-2	O-3	O-4
Data bit	D0	D1	D2	D3							
In-/Outputs	I-1	I-2	O-3	O-4							

AC2024 - AS-i AirBox - eclass: 27242613 / 27-24-26-13

Mechanical data

Pneumatic system		two 3/2-way valves
Operating pressure range	[bar]	2...8 **)
Air flow at 6/5 bar	[Nl/min]	350
Air flow at 6/0 bar	[Nl/min]	550
Permissible compressed air		filtered (5 µm); lubricated (ISO-VG10) or not lubricated
Tube fitting [type/mm]		Legris LF 3000/8
Housing materials		PBT
Weight	[kg]	0.255
Displays / operating elements		
Power	LED	green
Function display	LED	yellow
Electrical connection		
Connection		contact pins on FC or SC lower module

Wiring



- Inputs
- 1: Sensor supply L+
 - 2+4: Data input (internally bridged)
 - 3: Sensor supply L-

Remarks

Remarks		**) incl. possible pressure peaks 1) Notes on compressed air and EMC/ESD at www.ifm.com
Pack quantity	[piece]	1