

no longer available - archive entry Alternative article: AC1028

When selecting an alternative article and accessories please note that technical data may differ!

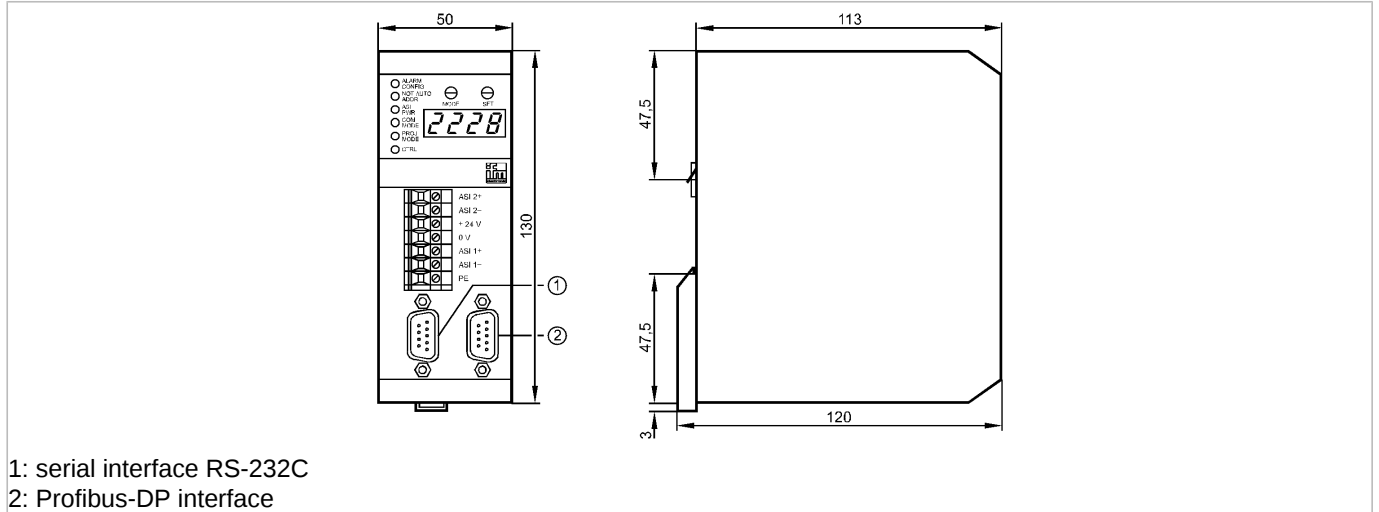
ecomat300

AC1006



Contr 2MSTR 1RS232C 1DP

AS-Interface bus system



Product characteristics

AS-i controller

Housing for DIN rail mounting

Standard interface Profibus-DP

Full master functions

Programming via interface RS-232C

Application

Application

Use as minicontroller and gateway

Electrical data

Electrical design

AS-i controller with 2 masters

Operating voltage [V]

22...30 DC (24 DC *))

Total current consumption from

AS-i [mA]

< 80 **)

Power consumption [VA]

< 10

Insulation rating [V]

500

Electrical separation

yes

Outputs

Integrated watchdog

yes

Interfaces

Programming interface

RS-232 C; SUB-D9 plug; 4800...62400 Baud

Data interface

Profibus-DP (to DIN 19245 Part 3);

SUB-D9 socket; 9600...12 M Baud

PNO ident. 0 x 00AB

Environment

Ambient temperature [°C]

0...60

Storage temperature [°C]

-20...70

Max. relative air humidity [%]

< 95

Protection

IP 20

AS-i classification

AS-i profile

M1

AS-i certificate

22501

Mechanical data

Housing materials

aluminum

Weight [kg]

0.569

Displays / operating elements

AC1006 - AS-i controller - eclass: 27259090 / 27-25-90-90

Display	Power 2 x LED red 2 x LED green 2 x LED yellow
---------	--

Electrical connection Connection	7 screw terminals
-------------------------------------	-------------------

Wiring

7	AS-i 2+
6	AS-i 2-
5	+ 24 V
4	0 V
3	AS-i 1+
2	AS-i 1-
1	PE

Remarks	
Remarks	*) to PELV **) typical 60

Pack quantity	[piece]	1
---------------	---------	---

ifm efector, inc. • 1100 Atwater Drive • Malvern • PA 19355 — We reserve the right to make technical alterations without prior notice. — US — AC1006 — 06.03.2003

no longer available - archive entryAlternative article: AC1028

When selecting an alternative article and accessories please note that technical data may differ!