

no longer available - archive entry Alternative article: AC1334

When selecting an alternative article and accessories please note that technical data may differ!

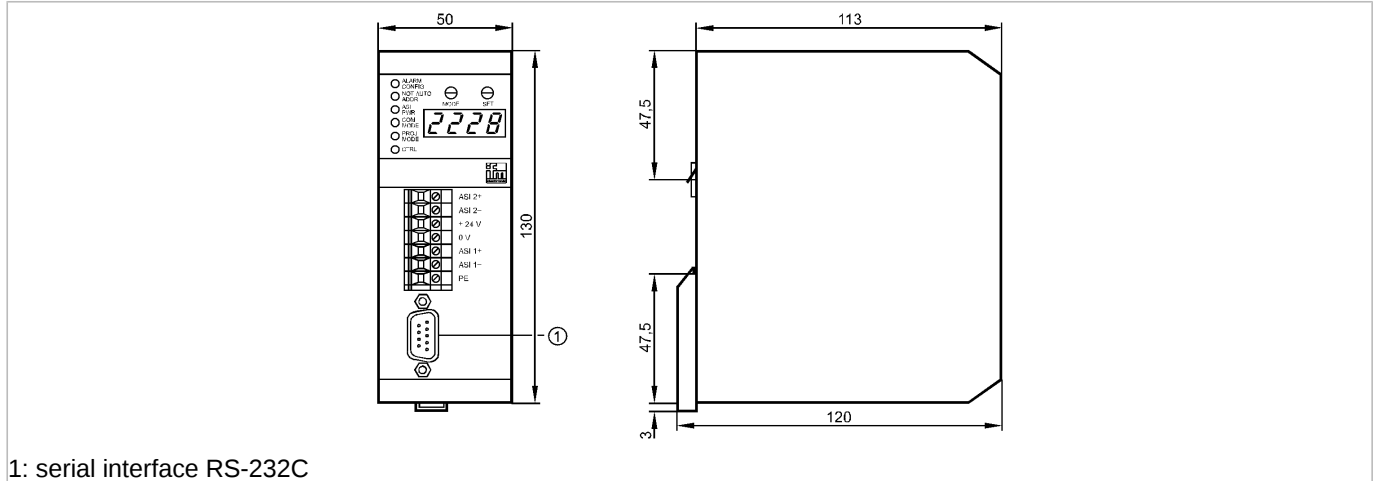
ecomat300

AC1004



CONTR 2MSTR 1RS232C

AS-Interface bus system



1: serial interface RS-232C



Product characteristics

AS-i controller

Housing for DIN rail mounting

Programming and data exchange via standard RS-232C interface

Full master functions

Application

Application

Mini-controller for signal preprocessing

Electrical data

Electrical design

AS-i controller with 2 masters

Operating voltage [V]

22...30 DC (24 DC *))

Total current consumption from

AS-i [mA]

< 80 **)

Power consumption [VA]

< 10

Insulation rating [V]

500

Electrical separation

yes

Interfaces

Programming interface

RS-232 C; SUB-D9 plug; 4800...62400 Baud

Environment

Ambient temperature [°C]

0...60

Storage temperature [°C]

-20...70

Max. relative air humidity [%]

< 95

Protection

IP 20

Tests / approvals

Shock / vibration resistance

< 15 g (11ms) / < 55 Hz (0.5mm)

AS-i classification

AS-i profile

M1

AS-i certificate

22502

Mechanical data

Housing materials

aluminum

Weight [kg]

0.557

Displays / operating elements

Display

function check 2 x LED red
2 x LED green
2 x LED yellow

Electrical connection

Connection

7 screw terminals

AC1004 - AS-i controller - eclass: 27259090 / 27-25-90-90

Wiring

7	AS-i 2+
6	AS-i 2-
5	+ 24 V
4	0 V
3	AS-i 1+
2	AS-i 1-
1	PE

Remarks

Remarks

*) to PELV
**) typical 60

Pack quantity

[piece]

1

ifm efector, inc. • 1100 Atwater Drive • Malvern • PA 19355 — We reserve the right to make technical alterations without prior notice. — US — AC1004 — 19.06.2012
no longer available - archive entryAlternative article: AC1334

When selecting an alternative article and accessories please note that technical data may differ!