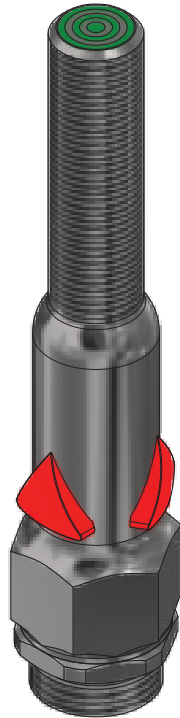
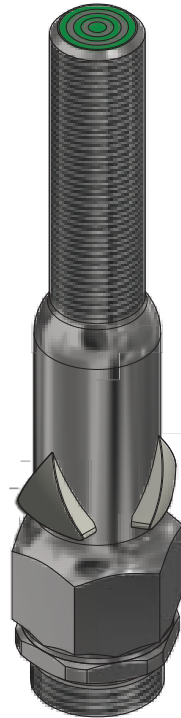


TARGET PRESENT
RED LED INDICATION



NO TARGET PRESENT
NO LED INDICATION



MODEL NUMBER

7LR-13568-DCD

PRODUCT LINE

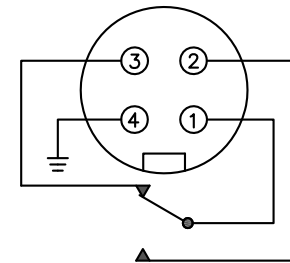
GO™ Switch 70 Series LED

SPECIFICATIONS

Model	7L- Red LED
Contact Form	SPDT
Sensing Range	0.100" End Sensing
Outlet Position	Bottom of Enclosure
Enclosure Material	316L Stainless Steel
Area Classification	cULus General Purpose
Wiring Option	4 pin Mini QDC
Custom Field	

WIRING DIAGRAM

4 PIN MINI CONNECTOR – DCD
SPDT FORM C



- PIN 1 – COM (BLACK)
- PIN 2 – N/O (WHITE)
- PIN 3 – N/C (RED)
- PIN 4 – GND (GREEN)

NAMEPLATE

Model #:
Serial #:
Type 4X
-40°C ≤ Ta ≤ 60°C
120VAC/0.25A; 24VDC/0.25A
Conduit: 1/2 NPT



www.electrosupply.com
sales@electrosupply.com
1-800-663-6576