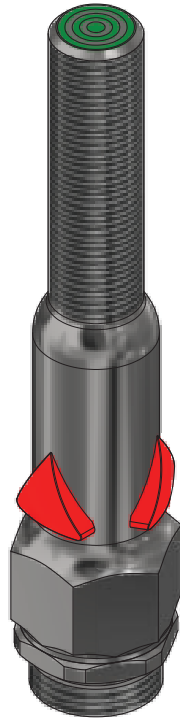
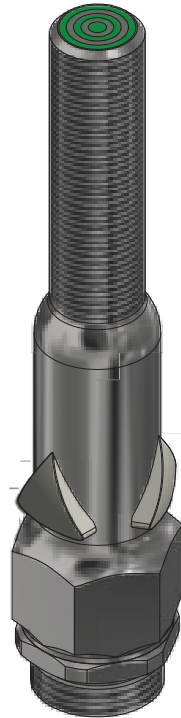


TARGET PRESENT  
RED LED INDICATION



NO TARGET PRESENT  
NO LED INDICATION



MODEL NUMBER

7LR-13568-DCA

PRODUCT LINE

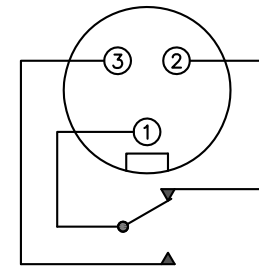
GO™ Switch 70 Series LED

SPECIFICATIONS

Model	7L- Red LED
Contact Form	SPDT
Sensing Range	0.100" End Sensing
Outlet Position	Bottom of Enclosure
Enclosure Material	316L Stainless Steel
Area Classification	cULus General Purpose
Wiring Option	3 pin Mini QDC
Custom Field	

WIRING DIAGRAM

3 PIN MINI CONNECTOR — DCA  
SPDT FORM C



PIN 1 — COM (GREEN)  
PIN 2 — N/C (BLACK)  
PIN 3 — N/O (WHITE)

NAMEPLATE

Model #:  
Serial #:  
Type 4X  
-40°C ≤ Ta ≤ 60°C  
120VAC/0.25A; 24VDC/0.25A  
Conduit: 1/2 NPT



www.electrosupply.com  
sales@electrosupply.com  
1-800-663-6576