

MODEL NUMBER

7FE843252-F4

PRODUCT LINE

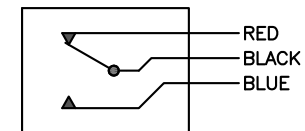
GO™ Switch 70 Series STG

SPECIFICATIONS

Model	2.075" probe length
Contact Form	SPDT, no indication
Sensing Range	0.090" end sensing
Outlet Position	Side entry, no conduit hub
Enclosure Material	Stainless steel, 3000 PSI
Area Classification	HiTemp, 400F
Wiring Option	Teflon leads, 12ft
Custom Field	

WIRING DIAGRAM

PVC/PTFE LEADS – 3 WIRE
SPDT



NAMEPLATE

Type 4X
0°C ≤ Ta ≤ 204°C
0.5A @ 125VDC
RATED 3,000 PSI
PROBE 2.075" (52.71mm)



www.electrosupply.com
sales@electrosupply.com
1-800-663-6576