

**MODEL NUMBER**

7FA643258-B3

**PRODUCT LINE**

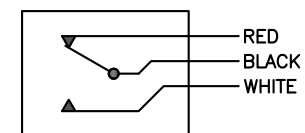
GO™ Switch 70 Series STG

**SPECIFICATIONS**

Model	1.125" probe length
Contact Form	SPDT, no indication
Sensing Range	0.090" end sensing
Outlet Position	Side entry, no conduit hub
Enclosure Material	Stainless steel, 3000 PSI
Area Classification	UL General Purpose
Wiring Option	PVC Cable - 6ft
Custom Field	

**WIRING DIAGRAM**

PVC CABLE — 3 WIRE  
SPDT



**NAMEPLATE**

Type 4X  
 0°C ≤ Ta < 40°C  
 0.5A @ 125VDC  
 RATED 3,000 PSI  
 PROBE 1.125" (28.58mm)



www.electrosupply.com  
 sales@electrosupply.com  
 1-800-663-6576