

MODEL NUMBER

7FA453258-A2

PRODUCT LINE

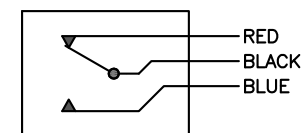
GO™ Switch 70 Series STG

SPECIFICATIONS

Model	1.075" probe length
Contact Form	SPDT, dual LED indication
Sensing Range	0.090" end sensing
Outlet Position	Side entry, no conduit hub
Enclosure Material	Stainless steel, 3000 PSI
Area Classification	UL General Purpose
Wiring Option	PVC Lead Wires - 3ft
Custom Field	

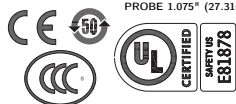
WIRING DIAGRAM

PVC/PTFE LEADS – 3 WIRE
SPDT



NAMEPLATE

Type 4X
 0°C ≤ Ta < 40°C
 0.5A @ 125VDC
 RATED 3,000 PSI
 PROBE 1.075" (27.31mm)



www.electrosupply.com
 sales@electrosupply.com
 1-800-663-6576