

**MODEL NUMBER**

7E-53258-A2

**PRODUCT LINE**

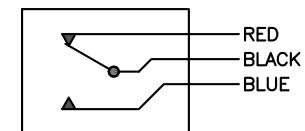
GO™ Switch 70 Series STG

**SPECIFICATIONS**

Model	2.062" probe length
Contact Form	SPDT, dual LED indication
Sensing Range	0.090" end sensing
Outlet Position	Side entry, no conduit hub
Enclosure Material	Stainless steel, 3000 PSI
Area Classification	UL General Purpose
Wiring Option	PVC Lead Wires - 3ft
Custom Field	

**WIRING DIAGRAM**

PVC/PTFE LEADS – 3 WIRE  
SPDT



**NAMEPLATE**

Type 4X  
 0°C ≤ Ta < 40°C  
 0.5A @ 125VDC  
 RATED 3,000 PSI  
 PROBE 2.062" (52.37mm)



www.electrosupply.com  
 sales@electrosupply.com  
 1-800-663-6576