

**MODEL NUMBER**

7E-43252-F2

**PRODUCT LINE**

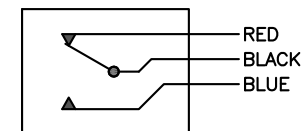
GO™ Switch 70 Series STG

**SPECIFICATIONS**

Model	2.062" probe length
Contact Form	SPDT, no indication
Sensing Range	0.090" end sensing
Outlet Position	Side entry, no conduit hub
Enclosure Material	Stainless steel, 3000 PSI
Area Classification	HiTemp, 400F
Wiring Option	Teflon leads, 3ft
Custom Field	

**WIRING DIAGRAM**

PVC/PTFE LEADS – 3 WIRE  
SPDT



**NAMEPLATE**

Type 4X  
0°C ≤ Ta ≤ 204°C  
0.5A @ 125VDC  
RATED 3,000 PSI  
PROBE 2.062" (52.37mm)



www.electrosupply.com  
sales@electrosupply.com  
1-800-663-6576