

MODEL NUMBER

7C-43752-F4

PRODUCT LINE

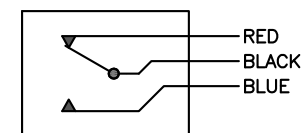
GO™ Switch 70 Series STG

SPECIFICATIONS

| | |
|---------------------|------------------------------|
| Model | 1.025" probe length |
| Contact Form | SPDT, no indication |
| Sensing Range | 0.090" end sensing |
| Outlet Position | Side entry, 1/2" NPT conduit |
| Enclosure Material | Stainless steel, 3000 PSI |
| Area Classification | HiTemp, 400F |
| Wiring Option | Teflon leads, 12ft |
| Custom Field | |

WIRING DIAGRAM

PVC/PTFE LEADS – 3 WIRE
SPDT



NAMEPLATE

Type 4X
 0°C ≤ Ta ≤ 204°C
 Conduit: 1/2 NPT
 0.5A @ 125VDC
 RATED 3,000 PSI
 PROBE 1.025" (26.03mm)



www.electrosupply.com
 sales@electrosupply.com
 1-800-663-6576